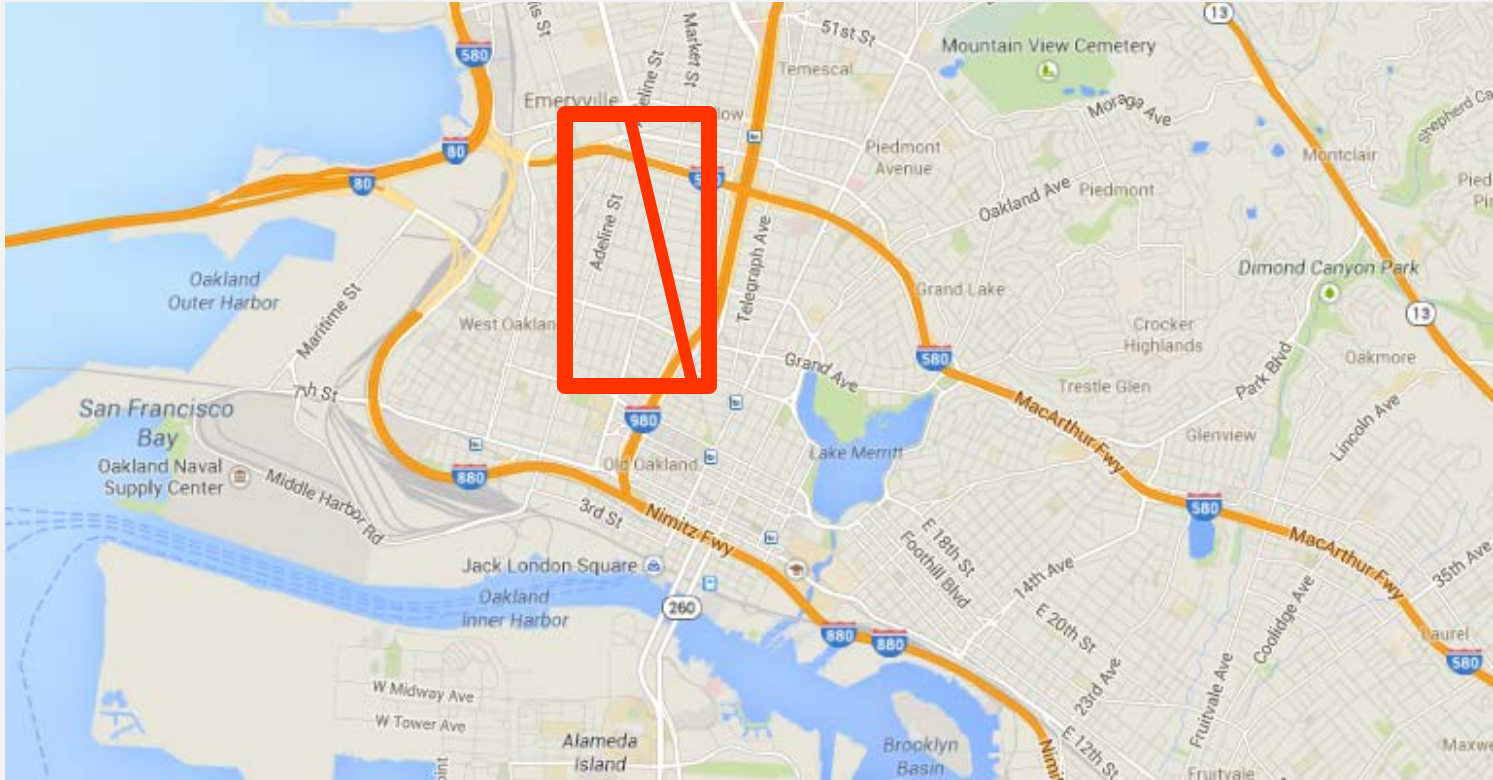


San Pablo Corridor – Partners in Progress



EAST BAY ASIAN LOCAL
DEVELOPMENT CORPORATION
www.ebaldc.org

Ener Chiu
Commercial Planning and Services

Operation Hope

August 26, 2014

San Pablo Corridor

EBALDC Presence:

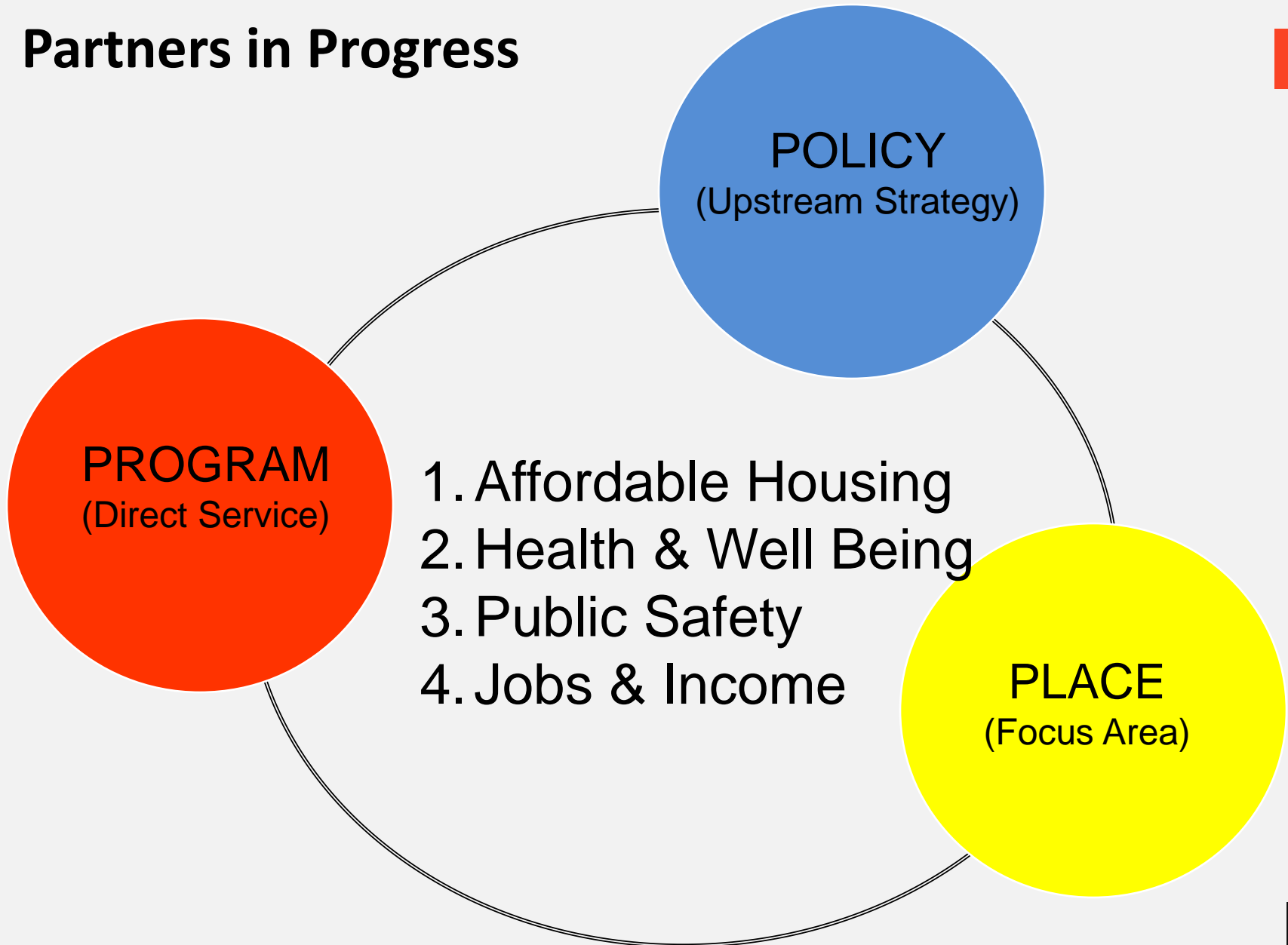
- Four buildings
- Three sites in predev
- 348 residential units
- 42K SF commer. space
- Approx 70 F/T staff

Partners in Progress:

- Citi Foundation
- Low Income Investment Fund
- Federal Reserve Bank of San Francisco



Partners in Progress



JOBS & INCOME – Proposed Outcomes

1. Increase income of residents who are very-low and low-income wage earners (particularly SNAP and WIC participants, re-entry population, parents with young children, and HS students).
2. Increase resident access to industry jobs coming into the corridor and West Oakland.
3. Increase business occupancy along San Pablo Ave. Corridor.

JOBS & INCOME – PROGRAM WORK

Direct services to address acute problems, alleviate symptoms, assist vulnerable populations

- Areas of Work
 - Food Access and Retail job opportunities
 - Job training and placement
- Partnerships and Potential Partners
 - People’s Community Market
 - City of Oakland
 - West Oakland Job Resource Center

JOBS & INCOME – POLICY WORK

Upstream strategies, prevention, longer term actions, generational change

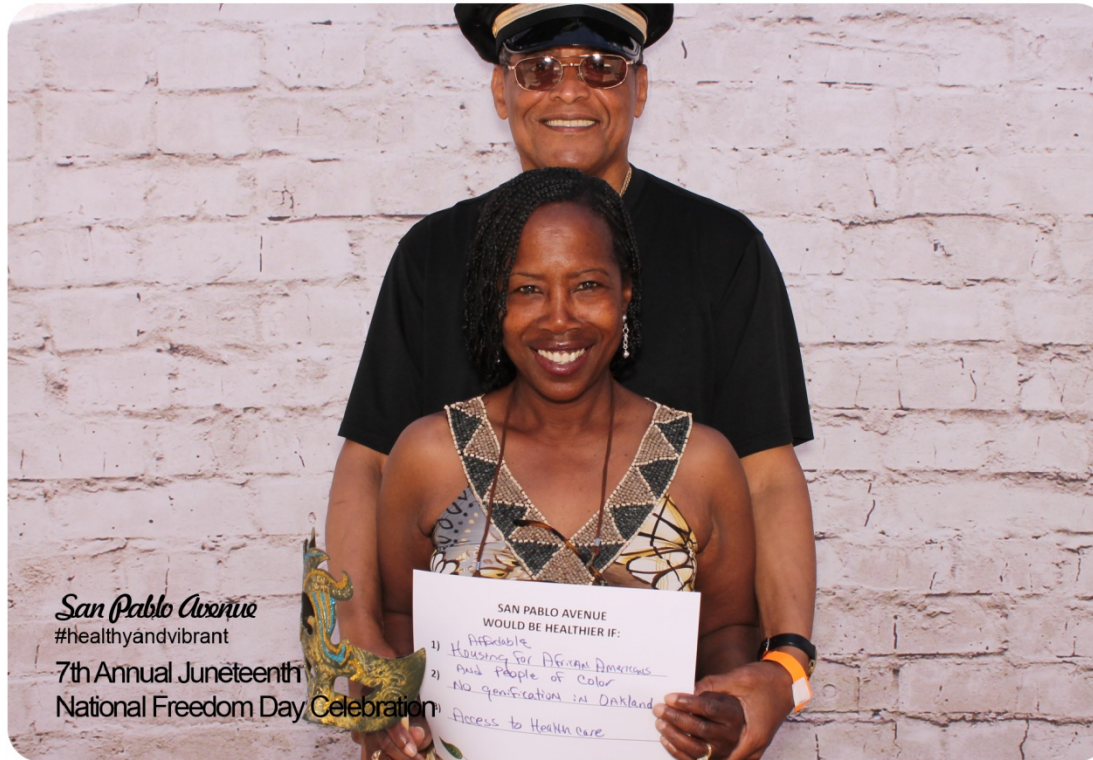
- Areas of Work
 - Community commercial zoning
 - Improve educational outcomes, prepare for future careers and opportunities
 - Labor market analysis, sector-based career ladders
 - Ensure availability of quality affordable childcare
- Partnerships and Potential Partners
 - City of Oakland
 - Oakland Unified School District
 - First Five Alameda County

JOBS & INCOME – PLACE-BASED WORK

Giving geographic focus to the Program and Policy work

- Areas of Work
 - Commercial space development and leasing
 - Local business support
 - Leasing technical assistance
 - Façade/Streetscape improvement
 - West Oakland Specific Plan
 - BID formation
- Partnerships and Potential Partners
 - City of Oakland
 - Local residents

THANK YOU!!!



SAYYAPHOTOBOOTH.com

Questions?

Ener Chiu

Commercial Planning and Services Manager

510.287.5353 x338

echiu@ebaldc.org

