

Are High-Quality Schools Enough to Increase Achievement Among the Poor?
Evidence from the Harlem Children’s Zone*

Will Dobbie^a
Roland G. Fryer, Jr.^b

November 2010

Abstract

Harlem Children’s Zone (HCZ), which combines community programs with “No Excuses” charter schools, is one of the most ambitious social experiments to alleviate poverty of our time. We provide the first empirical test of the causal impact of attending the Promise Academy charter schools in HCZ on educational outcomes, with an eye toward informing the long-standing debate on whether schools alone can eliminate the achievement gap or whether the issues that poor children bring to school are too much for educators alone to overcome. Both lottery and instrumental variable identification strategies suggest that the effects of attending the Promise Academy middle school are enough to close the black-white achievement gap in mathematics. The effects in elementary school are large enough to close the racial achievement gap in both mathematics and English Language Arts. We conclude by presenting two pieces of evidence that suggest high-quality schools are enough to significantly increase academic achievement among the poor. Community programs appear neither necessary nor sufficient.

* We are extraordinarily grateful to Geoffrey Canada, Betina Jean-Louis and Bessie Wilkerson, Joel Klein, Jennifer Bell-Ellwanger and Joanna Cannon, Aparna Prasad and Gavin Samms, and Scott Walker for their endless cooperation in collecting the data necessary to perform our analysis and for hours of discussions and comments. We would also like to thank George Akerlof, Josh Angrist, David Autor, Melody Barnes, Roland Benabou, Esther Duflo, Arne Duncan, Fred Frelow, Edward Glaeser, Michael Greenstone, Lawrence Katz, Daniel Koretz, Steven Levitt, Lindsey Mathews, Kathleen McCartney, Jeannie Oates, Ben Olken, Orlando Patterson, Michelle Rhee, James H. Shelton III, Grover Whitehurst, William Julius Wilson, and seminar participants at Boston University, Brookings Institute, Canadian Institute for Advanced Research, Government Accounting Office, Harvard University (Economics, Graduate School of Education, Kennedy School of Government, and Sociology), Massachusetts Institute of Technology, and Princeton for detailed comments and feedback. Eduard Bogel, Vilsa E. Curto, Peter Evangelaki and Jonathan Scherr provided exceptional research assistance. Support from the Eli and Edythe Broad Foundation, through the Education Innovation Laboratory at Harvard University (EdLabs), is gratefully acknowledged. The usual caveat applies.

^a Public Policy Doctoral Program, Harvard Kennedy School (dobbie@fas.harvard.edu)

^b Department of Economics, Harvard University, EdLabs, and NBER (rfryer@fas.harvard.edu)

At nine months old, there are no detectable cognitive differences between black and white babies (Fryer and Levitt, forthcoming). Differences emerge as early as age two, and by the time black children enter kindergarten they lag whites by 0.64 standard deviations in math and 0.40 in reading (Fryer and Levitt, 2004). On every subject at every grade level, there are large achievement differences between blacks and whites that continue to grow as children progress through school (Campbell, Hombro, and Mazzeo, 2000; Neal, 2006; Fryer, forthcoming). Even accounting for a host of background factors, the achievement gap remains large and statistically significant (Jencks and Phillips, 1998; Fryer, forthcoming).

There have been many attempts to close the achievement gap. Early childhood interventions such as Head Start, Nurse-Family Partnership, and the Abecedarian Project boost kindergarten readiness, but the effects on achievement often fade once children enter school (Currie and Thomas, 1995; Olds, 2006; Fryer, forthcoming).¹ More aggressive strategies that place disadvantaged students in better schools through busing (Angrist and Lang, 2004) and school choice plans (Rouse, 1998; Krueger and Zhu, 2002; Cullen et al., 2005; Hastings et al., 2006), have also left the racial achievement gap essentially unchanged. There are several successful charter schools and charter-management organizations, but the bulk of the evidence finds only modest success (Hanushek et al., 2005; Hoxby and Rockoff, 2004; Hoxby and Murarka, 2009; Gleason et al. 2010). Even the most reform minded districts have not been able to substantially reduce the achievement gap (Fryer, forthcoming).²

The lack of progress has fed into a long-standing and rancorous debate among scholars, policymakers, and practitioners as to whether schools alone can close the achievement gap or whether the challenges children bring to school are too much for even the best educators to overcome. Proponents of the school-centered approach refer to anecdotes of excellence in particular schools or examples of other countries where poor children in superior schools outperform average Americans (Chenoweth, 2007). Advocates of the community-focused approach argue that teachers and school administrators are dealing with issues that originate outside the classroom, citing research that shows racial and socioeconomic achievement gaps are present before children enter school (Fryer and Levitt, 2004; 2006) and that one-third to one-half of the gap can be explained by family-environment indicators (Phillips et al., 1998; Fryer and Levitt, 2004). In this scenario, combating poverty and having more constructive out-of-school time

¹ There is some evidence that Head Start, Perry Preschool and Nurse-Family Partnership may have positive long-term impacts on outcomes such as crime, high-school graduation, and labor-market outcomes (Currie and Thomas, 2000; Ludwig and Miller, 2007; Olds, 2006; Deming, 2009).

² Strategies in these districts include smaller schools and classrooms (Achilles et al., 1993; Nye et al., 1995; Krueger, 1999; Krueger and Whitmore, 2001; Jepsen and Rivkin, 2002), mandatory summer school (Jacob and Lefgren, 2004) merit pay for principals, teachers and students (Podgursky and Springer, 2007; Fryer, 2010a; Fryer 2010b), after-school programs (Lauer et al., 2006; Redd et al., 2002), budget, curricula, and assessment reorganization (Borman and Hewes, 2003; Borman et al., 2007; Cook et al., 2000), and policies to lower the barrier to teaching via alternative paths to accreditation (Decker et al., 2004; Kane et al., 2008).

may lead to better and more-focused instruction in school. Indeed, Coleman et al. (1966), in their famous report on equality of educational opportunity, argue that schools alone cannot treat the problem of chronic underachievement in urban schools.

Harlem Children's Zone is a 97-block area in Harlem, New York, that combines "No Excuses" charter schools with a web of community services designed to ensure the social environment outside of school is positive and supportive for children from birth to college graduation.³ This provides a rich laboratory to understand whether communities, schools, or a combination of the two are the main drivers of student achievement. The answer to this question is of tremendous importance for global public policy as it goes to the heart of how communities and public goods should be allocated to alleviate racial and economic inequality. Many organizations around the world – from Houston to Hungary – are developing plans similar to the HCZ model. Currently, these initiatives focus on replicating HCZ's community programs.

To account for the fact that students who attend the Promise Academy charter schools in HCZ may not be a random sample, we exploit the fact that the Promise Academy is required to select students by lottery when the number of applicants exceeds the number of available slots for admission. The treatment group is composed of students who are lottery winners and the control group consists of students who are lottery losers. This allows us to provide a set of causal estimates of the effect of being offered admission into the Promise Academy on a range of outcomes, including test scores, attendance, and grade completion.

Our lottery identification strategy has important caveats. Lottery files are not available for the first middle school cohort or the most recent elementary or middle school cohorts, and the Promise Academy elementary school was not significantly oversubscribed in its first year, making it difficult to estimate the effect of being offered admission for this cohort. To complement the lotteries, our second identification strategy uses the interaction between a student's cohort year and whether she lives inside or outside of the Zone's boundaries as an instrumental variable. This approach takes advantage of two important features of the Promise Academy: (1) anyone is eligible to enroll in the schools, but only students living inside HCZ are actively recruited by HCZ staff; and (2) there are cohorts of children that are ineligible due to the timing of the schools' opening and their age. Our identification is driven by the between-cohort comparison of outcomes within the Zone, using the outcomes of children outside the Zone to control for natural year-to-year variation in test scores. If the interaction between a student's

³ While definitions vary, "No Excuses" schools typically allow the principal considerable administrative freedom, set measurable goals that are regularly tested using interim assessments, emphasize parent participation, and create a culture of universal achievement that make no excuses based on the students' background (Carter, 2000). The KIPP or Achievement First charter networks typify the "No Excuses" model.

address and cohort only affects his or her achievement through its effect on enrollment in the charter school, this provides another set of causal estimates.

Both statistical approaches lead us to the same conclusion. The Promise Academy charter schools in HCZ are effective at increasing the achievement of the poorest minority children. Students who enroll in the middle school gain about 0.2 standard deviations in math per year. Taken at face value, these effects are enough to close the black-white achievement gap in mathematics by ninth grade. Students in the Promise Academy elementary school gain approximately 0.2 standard deviations in both math and English Language Arts (ELA) per year, closing the racial achievement gap in both subjects by third grade. These results are robust across identification strategies, model specifications, and subsamples of the data. Students with higher previous test scores benefit more from attending the Promise Academy middle school than other students, but there are no other differences among subsamples.

There are two pieces of evidence that, taken together, suggest that high quality schools are enough to significantly increase the achievement of poor minority students (see also Abdulkadiroglu et al. (2009) and Angrist et al. (2010)). First, students who live outside the Zone garner the same benefit from attending the Promise Academy as the students inside the Zone, suggesting that proximity to the community programs is not important. Second, siblings of Promise Academy students, who have access to the same community programs but were ineligible for the Promise Academy because of their age, show no detectable gains in achievement.

The paper is structured as follows. Section II provides a brief overview of Harlem Children's Zone. Section III introduces the data and our research design. Section IV presents estimates of the impact of attending Promise Academy middle and elementary schools on educational outcomes. Section V discusses whether communities, schools, or both are most responsible for the results. Section VI concludes. There are three online appendices: Appendix A outlines each program offered by Harlem Children's Zone. Appendix B is a data appendix that details our sample and variable construction. Appendix C conducts a back of the envelope cost-benefit calculation.

II. Harlem's Children Zone

The Rheedlen Centers for Children and Families began in 1970 as an amalgam of after-school programs, truancy-prevention services, and anti-violence training for teenagers in schools. The president of Rheedlen, Geoffrey Canada, questioned their piecemeal strategy, feeling that the organization helped a handful of children while letting most slip through the cracks. In 1997, Canada created Harlem Children's Zone to address all the problems that poor children in Harlem were facing – housing, schools, crime, asthma, and so on – through a “conveyor belt” of services from birth to college. The approach is based on the assumption that one must improve both communities and schools to affect student

achievement. Starting with a 24-block area in central Harlem, the Zone expanded to a 64-block area in 2004 and a 97-block area in 2007. Figure 1 provides a map of Harlem Children's Zone and its expansion path.

HCZ offers a number of programs, which we have partitioned into "community" and "school" inputs. Community programs are available to anyone living near HCZ, and served 8,058 youth and 5,291 adults in 2007 – 2008. School inputs are provided to the approximately 1,300 students who attend the Promise Academy charter schools in HCZ.

Community Programs

HCZ has over 20 programs which are broad investments in community development and available to any child in New York City. These include early childhood programs (e.g., Baby College), public elementary-, middle- and high-school programs (e.g., karate, dance, after-school tutoring), a college-success office, family, community and health programs, foster-care prevention services, tax help and guidance, and so on. Web appendix A provides a description of all programs run by Harlem Children's Zone. HCZ's vision is to "create a tipping point" in the neighborhood so that children are surrounded by an enriching environment of college-oriented peers and supportive adults. This is consistent with the vision articulated by those who argue that changing communities is essential to closing the achievement gap.

School Programs

The Promise Academy charter schools in HCZ began in the fall of 2004 with the opening of the Promise Academy elementary and middle schools, followed in the fall of 2005 with the opening of the Promise Academy II elementary school. The Promise Academy will enroll a new kindergarten and sixth-grade cohort each year until it is a full K-12 school, while Promise Academy II will enroll a new kindergarten cohort each year until it is a full K-12 school.

Like many charter schools in New York City, the Promise Academy has an extended school day and year, with coordinated after-school tutoring and additional classes on Saturdays for children who need remediation in mathematics and English Language Arts skills. Our rough estimate is that Promise Academy students that are behind grade level are in school for twice as many hours as a traditional public school student in New York City. Students who are at or above grade level still attend the equivalent of about fifty percent more school in a calendar year.

The Promise Academy emphasizes the recruitment and retention of high-quality teachers and use a test-score value-added measure to incentivize and evaluate current teachers. The schools have had high teacher turnover: 48 percent of Promise Academy teachers did not return for the 2005 – 2006 school year,

32 percent left before 2006 – 2007, and 14 percent left before 2007 – 2008. Each teacher has an annual meeting with Geoffrey Canada to discuss their performance, and is supported by myriad behind-the-scenes efforts to make sure their time is spent primarily on teaching and not administrative tasks.

The schools provide free medical, dental and mental-health services (students are screened upon entry and receive regular check-ups through a partnership with the Children’s Health Fund), student incentives for achievement, nutritious cafeteria meals, support for parents in the form of food baskets, meals, bus fare, and so forth, and less tangible benefits such as the support of a committed staff. The schools also make a concerted effort to change the culture of achievement, emphasizing the importance of hard work in achieving success.

These types of school inputs are consistent with those that argue high-quality schools are enough to close the achievement gap. The Promise Academy is remarkably similar to other “No Excuses” charter schools, such as the Boston area charter schools studied in Abdulkadiroglu et al. (2009) and Angrist et al. (2010), with three exceptions. First, the Promise Academy does not require parents or students to sign a behavioral contract. HCZ argues that only the most motivated and trusting parents are willing to sign a contract, even if it is nonbinding. Second, at least for the most recent elementary school students, the Promise Academy enrolls students at a younger age (3 years old) than other charter schools. Third, Promise Academy students are exposed to a wide range of wrap-around services that are not typically available at other “No Excuses” charter schools.

III. Data and Research Design

We merge data from two sources: information from files at Harlem Children’s Zone and administrative data on student demographics and outcomes from the New York City Department of Education (NYCDOE).

The data from Harlem Children’s Zone consist of lottery files from the 2004 and 2005 elementary school lotteries and the 2005 and 2006 middle school lotteries.⁴ To insure that all students in the lottery have an equal chance of being admitted to the Promise Academy, we drop students with a sibling that received a winning lottery number in a previous year (who are automatically admitted), or if they have a sibling entered in a lottery in the same year (because even if one sibling wins the lottery, both are allowed to enroll). Including these data do not alter the results. When students enter more than one lottery, we only include the first lottery file. A typical student’s data include her name, birth date, parents’ or guardians’ names, home address, and lottery outcome.

⁴ The middle school lottery was not held in 2007, and test scores are not available for elementary cohorts who enrolled after 2006 as they are too young. Lottery files are missing for the 2004 and 2008 middle school cohorts and the 2006 elementary school cohort. We are able to include all three missing cohorts in our distance*cohort IV strategy.

The HCZ data were matched to the New York City administrative data using the maximum amount of information available. Match keys were used in the following order: (1) last name, first name, date of birth with various versions of the names (abbreviations, alternative spellings, hyphenated vs. non-hyphenated); (2) last name, first name, and various versions of the date of birth (most often the month and day reversed); (3) last name, first name, prior school, and prior grade with various likely adjustments to prior grade; (4) name, date of birth, and prior grade. Once these match keys had been run, the remaining data were matched by hand considering all available variables. In our final elementary school sample we only include students who we have test scores in 2009 – 2010, the most recent year available. Match rates to this sample were 84.1 percent for the winners of the kindergarten lottery (N=212), 78.4 percent for the losers of the kindergarten lottery (N=217). In our final middle school sample we only include students who we have test scores through eighth grade, including students who may have dropped out in high school. Match rates to this sample 82.9 percent for the winners of the middle-school lottery (N=211), and 79.2 percent for the losers of the middle-school lottery (N=401). Match rates to the NYCDOE administrative data are approximately 10 percent higher than the match rates to the analysis sample due to attrition. Details of the match rates and attrition for each lottery cohort are reported in Table 1. Our match rates and attrition are similar to previous work using charter lottery data (e.g. Hoxby and Muraka, 2009).

The NYCDOE data contain student-level administrative data on approximately 1.1 million students across the five boroughs of the NYC metropolitan area. The data include information on student race, gender, free and reduced-price lunch eligibility, behavior, attendance, and matriculation with course grades for all students and state math and ELA test scores for students in grades three through eight. The data also include a student's first and last name, birth date, and address. We have complete NYCDOE data spanning the 2003 – 2004 to 2009 – 2010 school years, with test score and basic demographic data available through the 1999 – 2000 school year.

The state math and ELA tests, developed by McGraw-Hill, are high-stakes exams conducted in the winters of third through eighth grade. Students in third, fifth, and seventh grades must score level 2 or above (out of 4) on both tests to advance to the next grade without attending summer school. The math test includes questions on number sense and operations, algebra, geometry, measurement, and statistics. Tests in the earlier grades emphasize more basic content such as number sense and operations, while later tests focus on advanced topics such as algebra and geometry. The ELA test is designed to assess students on three learning standards – information and understanding, literary response and expression, critical analysis and evaluation – and includes multiple-choice and short-response sections based on a reading and listening section, along with a brief editing task.

All public-school students, including those attending charters, are required to take the math and ELA tests unless they are medically excused or have a severe disability. Students with moderate disabilities or who are English Language Learners must take both tests, but may be granted special accommodations (additional time, translation services, and so on) at the discretion of school or state administrators. In our analysis the test scores are normalized to have a mean of zero and a standard deviation of one for each grade and year across the entire New York City sample.

We construct measures of absenteeism and matriculation using the NYCDOE data. Absenteeism is measured as the total number of absences a student accumulates during the first 180 days of the school year. After the first 180 days, the NYCDOE no longer collects absence data from schools. Matriculation is an indicator for whether a student is “on-time” given her expected grade. We impute an expected grade using the student’s birth date and New York law on school entry age. We compute a student’s cohort using the same information.

Using the student addresses provided by the NYCDOE, we also calculated the distance from each student’s home to the nearest point on the boundary of the Harlem Children’s Zone using arcGIS. When multiple addresses are available for a single student, we use the earliest available address.⁵ A student is defined as living “in the Zone” if they live completely inside or on the boundaries of the original 24-block Zone.⁶

Summary statistics for the variables that we use in our core specifications are displayed in Table 2. Students who entered the elementary or middle school lottery are more likely to be black, but no more likely to be eligible for free lunch than the typical New York City student. Students enrolled in the middle school lottery score about the same on fifth grade math and ELA tests as other students living in the Zone, but score 0.294 standard deviations and 0.263 standard deviations below the typical New York City student in fifth grade math and ELA respectively.

Table 2 also reports covariate differences between lottery winners and losers controlling only for lottery fixed effects. With a few exceptions, the differences in Table 2 are small and statistically insignificant. Among middle school applicants, lottery winners are 7.8 percent more likely to be male and 8.9 percent more likely to be eligible for free or reduced price lunch. Lottery winners also have fifth grade math and ELA test scores that are 0.072 and 0.075 standard deviations higher than lottery losers, though the differences are not statistically significant. The lack of a clear pattern or statistical significance seems to suggest that these are likely to be chance findings and not an indication of bias.

⁵ Another approach is to use the student’s address closest to the date of the lottery. The results are not sensitive to this alternative.

⁶ While the Zone expanded to a 64-block area in 2004 and a 97-block area in 2007, HCZ’s efforts continue to be focused in the original 24-block Zone (personal communication with HCZ). For that reason, we focus on that area, though results are qualitatively similar, though less precise, when we allow the definition of the Zone to change over time.

An alternative test of lottery quality is to estimate the “effect” of winning the lottery on predetermined outcomes. Results from this test for the middle school sample are available in Dobbie and Fryer (2010), who regress 5th grade outcomes on demographic controls and an indicator for whether a student won the lottery. Consistent with our results in Table 2, students selected in the lottery somewhat have higher math and ELA scores, but the results are not statistically significant.

Both middle and elementary school lottery winners attend the Promise Academy at a high rate. 69.9 percent of middle school and 59.9 percent of elementary school lottery winners enroll in the Promise Academy for at least one year. After accounting for lottery fixed effects, elementary school lottery winners are 11.3 percent more likely to have attended a charter school compared to lottery losers. This suggests that, at least for the elementary school, our estimates capture the effectiveness of the Promise Academy relative to other charter schools that those who lose the lottery attend. In contrast, middle school lottery winners are 53.7 percent more likely to have attended a charter school.

Research Design

We estimate two empirical models, which provide a set of causal estimates of the effect of attending the Promise Academy charter schools in HCZ on academic outcomes. The first empirical model exploits the fact that the Promise Academy is required to select students by lottery when demand exceeds supply. The second statistical model uses the interaction between cohort year and whether or not a student lives within the Zone’s boundaries as an instrumental variable.

Let the effect of the Promise Academy on student achievement be a linear function of the number of years spent at the school (PA_{igt}):

$$(1) \quad achievement_{igt} = \alpha_t + \lambda_g + \beta X_i + \rho PA_{igt} + \varepsilon_{igt}$$

where α_t and λ_g are year-of-test and grade-of-test effects, and X_i is a vector of demographic controls including gender, race, free lunch status, and, in the middle school regressions, previous test score in the same subject, special education status in previous grades, and whether the student spoke English as second language in previous grades. ε_{igt} is an error term that captures random variation in test scores.

The causal effect of attending the Promise Academy is ρ . If the number of years a student spends at the Promise Academy is randomly assigned, ordinary least squares (OLS) estimates of equation (1) would capture the average causal effect of years spent at the Promise Academy. Because students and parents selectively choose whether to enroll at the Promise Academy, however, OLS estimates are likely to be biased by correlation between school choice and unobserved characteristics related to student ability, motivation, or background.

Our first strategy identifies ρ by comparing the average outcomes of students who ‘won’ the lottery to the average outcomes of students who ‘lost’ the lottery in years with complete data. The lottery losers therefore form the control group corresponding to the counterfactual state that would have occurred for students in the treatment group if they had not been offered a spot in the charter school.

Under several assumptions (that the treatment group assignment is random and that winning the lottery only affects outcomes through Promise Academy enrollment), we can estimate the average effect of treatment for students induced into enrollment by the lottery offer. The parameter is estimated through a two-stage least squares regression of student outcomes on years of enrollment (PA_{igt}) with the lottery offer as an instrumental variable for enrollment.

The first stage equations for IV estimation take the form:

$$(2) \quad PA_{igt} = \chi_t + \kappa_g + \sum_j \mu_j lottery_{ij} + \gamma X_i + \pi Z_i + \eta_{igt},$$

where the lottery indicators $lottery_{ij}$ control for which lottery the student entered and π captures the effect of the lottery offer (Z_i) on the number of years a student spends at the Promise Academy. We define lottery winners as students who receive a winning lottery number or whose waitlist number was below the average highest number called across all years. Given the size of the estimated treatment effect, our results are robust to other definitions of “lottery winner.”

To compliment our lottery strategy, our second statistical approach exploits whether a student lives within the Zone’s boundaries interacted with cohort year as an instrumental variable. Two forces drive our identification. First, we compare outcomes between children living in the Zone who were eligible for its charter schools and students living in the Zone who were not eligible. For example, students who started kindergarten in 2003 were ineligible for the Promise Academy, which began enrolling kindergarten students in 2004. As the 2003 cohort is likely to be quite similar to the 2004 cohort, they provide a plausible counterfactual. Second, we compare the outcomes of children living outside the Zone in the two cohorts to adjust for year-to-year variation that may come about through broad citywide reforms. While anyone is eligible to enroll in the schools, only students living inside the Zone are actively recruited by HCZ staff. If these recruitment efforts are effective, there should be a relationship between address and the probability of enrollment for eligible cohorts.

The first stage equations for our second strategy lets enrollment in Promise Academy be a function of student characteristics (X_i), home address ($inZone_i$), cohort year ($cohort_i$), and the interaction between address and cohort year:

$$(3) \quad PA_{igt} = \alpha_t + \lambda_g + \beta X_{igt} + \gamma inZone_i + \delta cohort_i + \eta(inZone_i * cohort_i) + \varepsilon_{igt}$$

The residual of this equation captures other factors that are correlated with enrollment in Promise Academy that may be related to student outcomes. The key identifying assumptions of our approach is that (1) the interaction between address (in or out of Zone boundaries) and cohort year is correlated with enrollment, and (2) the interaction between address and cohort year only affects student outcomes through its effects on the probability of enrollment, not through any other factor or unobserved characteristic.

The first assumption is testable. Appendix Table 1 presents first stage results. We pool outcomes across grades, and regress years of enrollment on controls for grade, gender, race, lunch status, cohort, whether a student lives within the original 24-block HCZ, and the interaction between cohort and whether a student lives within the original 24-block HCZ. The middle school regression also controls for special education status, whether the student speaks English as second language, and previous test scores. The coefficients on our excluded instruments - the interaction between address and cohort - are large, positive and statistically significant for nearly all of the cohorts eligible for the Promise Academy.⁷ The one exception is the coefficient on the interaction term for the 2005 middle school cohort, which is negative and imprecisely estimated. For cohorts that are not eligible for the Promise Academy, the estimated impact of living in the Zone is small and of inconsistent sign.⁸ A joint F-test with the null that the excluded instruments are jointly equal to zero is strongly rejected (p-value 0.000) in both the elementary and middle school regressions.

The validity of our second identifying assumption – that the instruments only affect student outcomes through the probability of enrollment – is more difficult to assess. To be violated, the interaction between a student’s address and cohort year must be correlated with her outcomes after controlling for the student’s background characteristics, address and cohort year. This assumes, for instance, that parents do not selectively move into the Children’s Zone based on their child’s cohort. Given that all children, regardless of their address, are eligible for HCZ programs, this seems a plausible assumption. Motivated parents can enroll their children in the programs no matter where they live; the relationship between distance to the Zone and enrollment comes about primarily through increased knowledge about the programs or cost of attending, not eligibility. We also assume that shocks either affect everyone in a given cohort regardless of address, or affect everyone at a given address regardless of cohort. If there is a something that shifts achievement test scores for third graders living inside the Children’s Zone, but not third graders outside the Zone or fourth graders inside the Zone, our second identifying assumption is violated.

⁷ The 2008 middle school cohort entered the Promise Academy in fifth grade, but middle school cohorts are defined using sixth grade. As a result, this cohort is labeled as the 2009 cohort in our regression.

⁸ Students in ineligible cohorts can enroll in the Promise Academy if they skip a grade or are held back. This may help explain why there is a small but statistically significant effect of living in the Zone on enrollment for some of the ineligible cohorts.

If our second identifying assumption is valid, there should be no difference in the relationship between eligible and ineligible students living inside the Zone and the relationship between eligible and ineligible students living outside the Zone. An informal test of this assumption is to look for differential trends in the characteristics of students living inside and outside of the Zone. Appendix Figures 1 and 2 plot the fraction of students who are either black or Hispanic and the fraction eligible for free lunch for our middle school and elementary school IV samples respectively. The middle school plot also includes the average math and ELA test score in 5th grade, one year before students are eligible for the Promise Academy. There is no evidence of a differential trend in any of the characteristics examined. Students living in and outside of the Zone are remarkably similar across cohorts. A more formal test of this assumption is to see if there is an “effect” of attending the Promise Academy on predetermined variables. Dobbie and Fryer (2010) show that the effect of attending the Promise Academy middle school on 5th grade test scores – a year before students enroll at the school - are small and statistically insignificant.

Under these assumptions (and a monotonicity assumption that being born into an eligible cohort in the Zone does not make a student less likely to enroll) we can estimate the causal impact of enrolling in the Promise Academy. The identified parameter measures the average effect of treatment for students induced into enrollment by the instrument. The parameter is estimated through a two-stage least squares regression of student_{igt} outcomes on years of enrollment (PA_{igt}) with the interaction between address and cohort as an instrumental variable for enrollment.

IV. The Impact of the Promise Academy Charter Schools on Student Achievement

Promise Academy in HCZ – Middle School

Table 3 presents results for the Promise Academy middle school. We report reduced-form (column 1), first stage (column 2) and instrumental variable estimates (column 3) from our lottery sample and instrumental variable estimates from our distance*cohort strategy (column 4). Each row represents a different outcome of interest, including math and ELA achievement scores from standardized statewide exams, absences, and whether or not a student matriculates on time. The sample is restricted to students with outcome data through eighth grade, the last year where state test score data is available. We pool 6th through 8th grade outcomes and cluster standard errors at the student level. All regressions control for grade and year effects, gender, race, lunch status, lottery cohort, special education status, whether the student speaks English as second language, and previous test scores in the same subject.

Lottery winners score 0.284 (0.050) standard deviations higher in math than lottery losers and 0.059 (0.041) standard deviations higher in ELA in the reduced form result reported in column 1 of Table 3. The lottery first stage coefficient is about 0.1240 (0.075), as can be seen in column 2 of Table 3. In other words, by the time they were tested, lottery winners had spent an average of 1.240 years more at the

Promise Academy than lottery losers, comparable to lottery winners at other “No Excuses” charter schools (Abdulkadiroglu et al., 2009; Angrist et al., 2010). The two stage least squares (2SLS) estimate, which captures the causal effect of attending the Promise Academy for one year, is 0.229 (0.037) in math and 0.047 (0.033) in ELA. Thus, if a student is enrolled in the Promise Academy from sixth through eighth grade, we expect them to have a 0.687 standard deviation increase in math and a 0.141 standard deviation increase in ELA. The magnitude of these results is consistent with other work on “No Excuses” charter schools (Abdulkadiroglu et al., 2009; Angrist et al., 2010), but substantially larger than the average charter in New York (Hoxby, 2009).

Promise Academy students are also less likely to be absent and just as likely to be on grade level. The 2SLS estimate of the effect of attending the Promise Academy on absences shows that PA students are absent 2.199 (0.650) fewer days for each year they attend the Promise Academy.

Column 4 in Table 3 presents instrumental variable estimates from our distance*cohort strategy. A key assumption of this identification strategy is that students outside the Zone provide an effective control for year-to-year variation (changes in the state assessment, new community programs, and so on). If shocks are local, it is preferable to restrict our sample to students who live very close to the Zone. If shocks are more widespread, however, expanding the number of students in our sample will increase precision without biasing our results. Appendix Figure 3 displays poverty rates of the Zone and the surrounding areas. Addresses within 800 meters of the Zone are quite similar. As we get farther away from the original Zone the sample includes more and more affluent areas. Because of this we present results for individuals within 800 meters of the Zone. The results are qualitatively if we estimate the same specification using individuals 1600 and 2400 meters from the Zone (Dobbie and Fryer, 2010). We control for the same set of covariates as the lottery results, and address and cohort controls. Standard errors are clustered at both the student and cohort level.⁹

Using the distance*cohort IV strategy described above, the effect of attending the Promise Academy is 0.206 (0.092) standard deviations in math and -0.053 (0.068) in ELA. Thus, after three years at the Promise Academy middle school, our estimate suggests that math scores will increase 0.618 standard deviations. Taken together with our lottery results, this suggests that the Promise Academy middle school has a significant impact on math scores, but little impact on ELA scores. The distance*cohort 2SLS estimate on attendance is -0.220 (2.544) but statistically insignificant. The estimate on being at grade level is -0.011 (0.036) but is not statistically significant.

⁹ There are 10 cohort clusters in the middle school distance*cohort sample and 13 in the elementary school distance*cohort sample. Clustered standard errors are likely to be downwards biased when there are fewer than 50 clusters (Bertrand et. al, 2004). The distance*cohort standard errors should be interpreted with this caveat in mind.

Table 4 explores the heterogeneity of our estimated treatment effects in a variety of subsamples of the data. We report only the 2SLS estimates from our lottery results and their associated standard errors. Each column presents coefficients for two mutually exclusive and collectively exhaustive subsamples. We test for differences by gender, free lunch status, and pre-lottery test scores. We use the average of fifth grade math and ELA test scores as our measure of pre-lottery achievement. We are unable to test for differences by ethnicity, as our sample is more than 80 percent Black. We find no statistically significant differences by gender or free lunch status. On the other hand, students with higher pre-lottery test scores gain 0.287 more per year in ELA (p-value 0.000). This is due, in part, to the troubling fact that students with below median pre-lottery test scores have a negative treatment effect -- - 0.096 (0.051) – that is marginally significant. Students above the median miss 1.1895 fewer days per year (p-value 0.028) and are 0.059 percentage points more likely to be on grade level (p-value 0.023).

The lottery estimates in Table 3 uses the sample of students for whom we have post-lottery test scores. If lottery winners and lottery losers have different rates of selection into this sample, our results may be biased. A simple test for selection bias looks at the impact of the lottery offer on the probability of entering our analysis sample. Appendix Table 2 reports the effect of winning the Promise Academy middle school lottery on the probability of entering the analysis sample. Lottery winners are about 3 percent more likely to enter our sample, but the estimate is only significant at the 10 percent level. This estimate is more modest than found in Abdulkadiroglu et al. (2009), and suggests that any selection bias from differential attrition is likely to be modest. As a check of our main findings, we discard the top 3 percent of observations from the lottery treatment group and rerun our results in columns 2 through 4 of Appendix Table 2. The estimates are nearly identical to those reported in Table 3.

Promise Academy -- Elementary School

Table 5 is identical to Table 3 for the Promise Academy elementary school. As before, we report reduced-form (column 1), first stage (column 2) and instrumental variable estimates (column 3) from our lottery sample and instrumental variable estimates from our distance*cohort strategy (column 4). Each row represents a different outcome of interest, including math and ELA achievement scores from standardized statewide exams, absences, and whether or not a student matriculates on time. The sample includes all students with data in 2009 – 2010, the most recent available. All regressions control for grade and year effects, lottery cohort, gender, race, and lunch status. The distance*cohort regressions also control for address and cohort effects. Standard errors are clustered at the student level in the lottery regressions and both the student and cohort level in the distance*cohort regressions.

The reduced form estimates suggest that children who attend the elementary school gain 0.160 (0.097) standard deviations in math and 0.095 (0.083) standard deviations in ELA per year. Students have

2.045 (1.178) fewer absences per year and appear no less likely to advance on time. The first stage for the lottery IV is 0.834, so one can multiply the reduced form effects by 1.21 to obtain the 2SLS estimates based on the lottery sample. Our 2SLS estimates imply that students who are enrolled in the Promise Academy schools from kindergarten through fifth grade are expected to gain 1.146 standard deviations in math and 0.570 standard deviations in ELA relative to the control group. Promise Academy students are also less likely to be absent and no less likely to be on grade level.

Column 4 in Table 5 presents estimates from our distance*cohort IV strategy. The reported coefficient is again the number of years enrolled at the Promise Academy charter school, which is instrumented for using the interaction between a student's address (in or out of the Zone's boundaries) and cohort. The distance*cohort estimates suggest that students at the Promise Academy gain 0.324 (0.084) standard deviations in math and 0.420 (0.075) in ELA for each year they are enrolled – yielding an expected increase of 1.944 standard deviations in math and 2.520 standard deviations in ELA for students who attend from kindergarten through fifth grade.

The relatively large gains in ELA are particularly noteworthy in light of the middle-school results, suggesting that deficiencies in ELA might be addressed if intervention occurs relatively early in the child's life. This is consistent with developmental research that shows that the critical period for language development occurs early in life, while the critical period for developing higher cognitive functions extends into adolescence (Hopkins and Bracht, 1975; Newport, 1990; Pinker, 1994; Nelson, 2000; Knudsen et al., 2006).

Table 6 explores the heterogeneity of our estimated treatment effects by gender and free lunch status. We report only the 2SLS estimates from our lottery results and their associated standard errors. We are again unable to test for differences by ethnicity as students in our sample are overwhelmingly Black. There are no statistically significant differences among subsets boys and girls or free lunch status and not free lunch status. We cannot reject the null hypothesis that every subgroup benefits equally from attending, though as before we do not have enough statistical power to rule out small or medium-sized differences. This is particularly true for students not eligible for free lunch, which make up only a small fraction of the Promise Academy student body.

Appendix Table 3 tests for differential selection into our elementary school lottery sample. In column 1 we report the effect of winning the Promise Academy elementary school lottery on the probability of entering the analysis sample. Lottery winners are 2.0 percent more likely to enter our sample, but the estimate is not statistically significant. Again, we check of the main findings by discarding the top 2 percent of observations from the lottery treatment group and rerunning our results in columns 2 through 4 of Appendix Table 3. The estimates are nearly identical to those reported in Table 5.

Let us put the magnitude of our estimates in perspective. Jacob and Ludwig (2008), in a survey of programs and policies designed to increase achievement among poor children, report that only three reforms pass a simple cost-benefit analysis: lowering class size, bonuses for teachers for teaching in hard-to-staff schools, and early childhood programs. The effect of lowering class size from 24 to 16 students per teacher is approximately 0.22 (0.05) standard deviations on combined math and reading scores (Krueger, 1999). While a one-standard deviation increase in teacher quality raises math achievement by 0.15 to 0.24 standard deviations per year and reading achievement by 0.15 to 0.20 standard deviations per year (Rockoff, 2004; Hanushek and Rivkin, 2005; Aaronson, Barrow, and Sander, 2007; Kane and Staiger, 2008), value added measures are not strongly correlated with observable characteristics of teachers making it difficult to ex ante identify the best teachers. The effect of Teach for America, one attempt to bring more skilled teachers into poor performing schools, is 0.15 standard deviations in math and 0.03 in reading (Decker et al., 2004). The effect of Head Start is 0.147 (0.103) standard deviations in applied problems and 0.319 (0.147) in letter identification on the Woodcock-Johnson exam, but the effects on test scores fade in elementary school (Currie and Thomas, 1995; Ludwig and Phillips, 2007). Fryer (2010a) finds that input based student incentives also pass a cost-benefit analysis, with an effect size of approximately 0.15 standard deviations in both math and reading depending on the nature of the incentives and the age of the student. All these effect sizes are a fraction of the impact of being offered admission into the Promise Academy charter schools. Abdulkadiroglu et al. (2009) and Angrist et al. (2010) find effect sizes closest to our own, with students enrolled in a set of Boston area “No Excuses” charter middle schools gaining about 0.4 standard deviations a year in math and 0.1 standard deviations a year in reading.

Although the results for both middle and elementary school samples provide some optimism about the potential for a set of school based investments to increase achievement among poor students, one worries that improvements on state exams may be driven by test specific preparatory activities at the expense of more general learning (Jacob 2005) or cheating (Jacob and Levitt 2003).¹⁰ Whether these academic gains will translate into improved longer term outcomes (health, education, crime, wages) is an important open question.

V. Communities, Schools, or Both?

¹⁰ Using an algorithm similar to Jacob and Levitt (2003), we implement two statistical tests of cheating on the high stakes state test at Promise Academy. First, we tested whether Promise Academy students are more likely to have an unusual block of consecutive identical answers, and second we tested whether Promise Academy students systematically underperform on easy questions while over-performing on hard questions. Neither approach detects cheating at Promise Academy.

Promise Academy students are exposed to a network of community services in the Harlem Children’s Zone along with education investments ranging from a longer school day and year to after-school programs to mental and physical health services. The community services – the community centers, truancy-prevention programs, the network of targeted programs such as the asthma and obesity initiatives, and so on – are available to any child in HCZ. These programs may plausibly affect student outcomes in any number of ways, from mitigating the physical and emotional barriers to success to providing a more supportive out-of-school learning environment.

Consider a simple model of education production where achievement is a function of school inputs (s), community inputs (c), and a range of other inputs (\vec{x}) which might include parental involvement, teacher quality, and so on. For simplicity, we assume the production function $f(s, c, \vec{x})$ is twice continuously differentiable and additively separable. In our distance*cohort IV strategy, we use the difference between eligible cohorts living in the Zone (whose treatment is equal to $\frac{\partial f}{\partial s} + \frac{\partial f}{\partial c} + \frac{\partial^2 f}{\partial s \partial c}$) to ineligible cohorts living in the Zone (whose treatment is equal to $\frac{\partial f}{\partial c}$). The IV estimate therefore identifies the school and interaction effects ($\frac{\partial f}{\partial s} + \frac{\partial^2 f}{\partial s \partial c}$). Lottery estimates identify identical parameters.

There are two pieces of evidence that suggest that high quality schools are enough to explain the large treatment effects presented in the earlier section ($\frac{\partial^2 f}{\partial s \partial c} \approx 0$). Our first piece of evidence comes from our lottery identification strategy, where we separately estimate the treatment effect of attending the Promise Academy for students who live inside the Zone’s boundaries (which identifies $\frac{\partial f}{\partial s} + \frac{\partial f}{\partial c} + \frac{\partial^2 f}{\partial s \partial c}$) and for students who live outside the Zone (which identifies $\frac{\partial f}{\partial s}$).¹¹

Tables 7 and 8 show the estimated treatment effect of the attending the Promise Academy for students who live within 400 meters of the Zone and students who do not for the middle and elementary school lottery samples respectively. We report instrumental variable estimates and their associated standard errors clustered at the student level. There are no statistically significant differences among students who live near and not near the Zone in math, ELA or absences. Students who attend the Promise Academy elementary school are somewhat more likely to be on grade level if they live close to the Zone (p-value 0.046), but there is no statistically significant difference for the middle school. Taken together,

¹¹ While students who live outside the Zone may participate in community programs within the Zone, administrative data from HCZ show it is very unlikely.

these results are consistent with the idea that students do not benefit more from attending the Promise Academy if they live close to the Zone. Changing the definition of “close” to 200 or 600 meters away does not change the results.

Our second piece of evidence comes from an analysis of siblings of Promise Academy students who were ineligible for the school because of their age. In addition to having greater access to HCZ’s programs, siblings of Promise Academy students also have access to programs that are only provided to Promise Academy students and their families. This includes the provision of nutritious fruits and vegetables, pre-made meals, money and travel allowances to ensure kids get to school, and general advice on how to support their child’s learning. If these programs are important for achievement, the siblings of the charter-school students (who did not enroll in the Promise Academy themselves) will benefit. The effect on siblings who do not attend the promise academies is $\alpha \frac{\partial f}{\partial c}$, where $\alpha \in (0,1)$ represents the degree to which attending the Promise Academy is a gateway to community programs above and beyond what would be expected if no one from the family attended the school.

Table 9 presents sibling-peer results in the middle-school sample.¹² We begin by linking students entered in Promise Academy middle school lottery to their siblings in other New York City schools, dropping the linked siblings if they are enrolled at the Promise Academy. We define siblings as any two students who share the same last name and address at any point in time. We regress the linked sibling’s outcomes on controls for her grade, year, pre-lottery outcomes, gender, race, eligibility for free price lunch, and the number of years a middle school lottery applicant spent at the Promise Academy. We instrument for the lottery applicant’s years of enrollment using lottery number. Standard errors are clustered at the family level.

To address concerns that the subset of Promise Academy students with siblings may be different than the subset without siblings, we replicate our main results from Table 3 for both groups. Students with and without siblings experience nearly identical gains to Promise Academy enrollment.

The effect on a sibling of a lottery applicant enrolling at Promise Academy appears to be relatively small on test scores, though large standard errors make sharper conclusions impossible. Siblings of enrolled lottery winners gain approximately 0.051 (0.119) standard deviations in math and 0.087 (0.113) standard deviations in ELA for each year a student is enrolled at the Promise Academy. Taken at face value, this suggests that there is likely little to no effect on achievement test scores from the combination of the community and student-family programs.

¹² Most siblings of the Promise Academy elementary students are too young to have valid test scores or are also enrolled in the Promise Academy. We therefore concentrate our analysis on siblings of the middle school cohort.

We have provided some evidence that the Promise Academy's success in raising test scores is unlikely to be driven by the bundle of community services, either directly or indirectly, and that the combined effects of the student-family and community programs on test-scores are, at best, modest. This suggests that the Promise Academy charter schools are the main driver of our results. This results is important particularly given the movement across the U.S. and around the world to develop Children's Zones with an emphasis on community programs.

VI. Discussion

The racial achievement gap in education is one of America's most pressing social concerns. The typical black seventeen year-old reads at the proficiency level of the typical white thirteen year-old (Campbell et al., 2000). On the Scholastic Aptitude Test there is little overlap in the *distribution* of scores (Card and Rothstein, 2007). There has been very little progress in solving the achievement gap.

The Promise Academy is successful at boosting achievement in math and ELA in elementary school and math in middle school. The impact of being offered admission into the Promise Academy middle school on ELA achievement is likely positive, but less dramatic. We provide two pieces of evidence – a comparison of lottery winners who live outside the Zone with those who live inside the Zone and a comparison of siblings of lottery entrants – that suggests our results are driven by the school inputs at the Promise Academy and not the community programs provided by HCZ.

These results are consistent with recent evaluations of the Moving to Opportunity experiment (MTO) and “No Excuses” charter schools similar to the Promise Academy. MTO, which relocated individuals from high-poverty to lower poverty neighborhoods while keeping the quality of schools roughly constant, showed null results for girls and negative results for boys (Sanbonmatsu et al., 2006; Kling et al., 2007). This suggests that a better community, as measured by poverty rate, does not significantly raise test scores if school quality remains essentially unchanged. Recent analyses of other “No Excuses” charter schools with many of the same school inputs as the Promise Academy show similar effects without community programs (Abdulkadiroglu et al. 2009; Angrist et al. 2010), suggesting that community programs are not necessary to generate large achievement gains.

An important open question is why the Promise Academy is so effective at educating the poorest minority students. It is plausible that high-quality teachers are responsible for a portion of the results as the estimates are similar to the variance of teacher quality in Rockoff (2004), Hanushek and Rivkin (2005), Aaronson et al. (2007), and Kane and Staiger (2008), which range from 0.15 to 0.24 standard-deviations in math and 0.15 to 0.20 in reading. Second, a linear combination of good policy choices may explain the results. In their analysis of New York City charter schools, Hoxby and Murarka (2009) estimate the relationship between a series of school policy choices and the success of the charter school.

Plugging in Promise Academy's combination of policies into Hoxby and Murarka's (2009) estimates predicts yearly gains of 0.54 standard deviations.¹³ Third, results from Banerjee, et al. (2007) in India show that remedial education – consistent with the manner in Promise Academy uses data to inform and differentiate instruction - can have very large effects (0.28 to 0.47 standard deviations).

As the Obama administration and other governments around the world decide whether and how to use the Harlem Children's Zone model to combat urban poverty, costs is an important consideration. The New York Department of Education provided every charter school, including the Promise Academy, \$12,443 per pupil in 2008-2009. HCZ estimates that they added an additional \$4,657 per-pupil for in-school costs and approximately \$2,172 per pupil for after-school and "wrap-around" programs. This implies that HCZ spends \$19,272 per pupil. To put this in perspective, the median school district in New York State spent \$16,171 per pupil in 2006, and the district at the 95th percentile cutpoint spent \$33,521 per pupil (Zhou and Johnson, 2008). The total budget for the HCZ – including its community and school investments – is roughly \$50 million per year.

Taken at face value, the achievement gains of Promise Academy students will translate into improved life trajectories. Our middle school lottery estimates – the most modest estimated - suggest that attending the Promise Academy for middle school is associated with a 4.8 to 7.5 percent increase in earnings (Neal and Johnson, 1996; Currie and Thomas, 2001), a 1.65 to 2.25 percent decrease in the probability of committing a property or violent crime (Levitt and Lochner, 2001), and a 7.5 to 11.25 decrease in the probability of having a health disability (Auld and Sidhu, 2005; Elias, 2005; Kaestner, 2009). If the Promise Academy affects educational attainment as dramatically as achievement, the implied benefits are enormous (e.g. Card, 1999; Oreopoulos, 2007). The public benefits alone from converting a high school dropout to graduate are more than \$250,000.¹⁴ Moreover, recent results from Chetty et al. (2010) suggest that long term benefits of a high quality education may operate through non-test score channels we do not observe in this paper.

We hope that our analysis provides a sense of optimism for work on the achievement gap. The HCZ initiative along with recent results in Abdulkadiroglu et al. (2009) and Angrist et al. (2010) demonstrate that the right combination of school inputs can be successful. The challenge going forward is

¹³ We use the regression coefficients reported on page 59 of Hoxby and Murarka (2009) and Promise Academy survey responses to construct our estimate. Promise Academy has the following characteristics (in order listed by Hoxby and Murarka, 2009, with associated regression coefficients in parentheses): has been operating for 4 years (-0.009), is a Charter Management Organization (-3.660), has 210 instructional days (0.021) and 8 instructional hours per day (-0.077), conducts Saturday school (0.153) and an optional after school program (0.058), uses a combination of original curriculum and the Core Knowledge curriculum (0.137/2 + 0.072/2), has an average class size of 20 (0.002), administers internal evaluations (-0.085), requires school uniforms (-0.179) and a dress code (0.139), does not have a broken windows disciplinary policy, does require a parent contract (-0.234) and reserve seats for parents on the board (0.233) and has one school leader (0.199).

¹⁴ See Web Appendix C for details on all of the cost-benefit calculations.

to find ways to transport these gains to traditional public schools, so that all children can receive a high quality education.

ONLINE ONLY – NOT FOR PUBLICATION

Appendix A: Complete List of Harlem Children’s Zone Programs

COMMUNITY INVESTMENTS

Early Childhood Programs

The Baby College offers nine-week parenting workshops to expectant parents and those raising a child up to three years old.

The Three Year Old Journey works with parents of children who have won the HCZ Promise Academy charter school lottery. Held on Saturdays over several months, it teaches parents about their child’s development, building language skills and parenting skills.

Get Ready for Pre-K involves children in small and large group activities that are designed to increase socialization skills, build routines, and provide exposure to their first classroom experience. The program has a particular focus on the development of pre-literacy skills. In order to prepare children for September entry into Harlem Gems Universal Pre-K or Head Start, four-year-old children attend Get Ready for Pre-K from 8 AM to 6 PM every day for six weeks during the preceding summer.

Harlem Gems Universal Pre-K is an all-day pre-kindergarten program that gets children ready to enter kindergarten. Classes have a 4:1 child-to-adult ratio, teach English, Spanish and French, and run from 8 a.m. to 6 p.m. HCZ runs three pre-kindergarten sites, serving over 250 children.

The *Harlem Gems Head Start* follows the same model as the Universal Pre-K but has a few important differences: 1) children can enter the Head Start at three or four years of age, thus a sizable proportion of the participants receive two years of instruction in the program, (2) because of income guidelines, students in Head Start tend to come from families with lower socioeconomic status than that of Universal Pre-K participants, and (3) while lead teachers at the UPK have master’s degrees, Head Start teachers have bachelor’s degrees.

Public Elementary School Programs

Harlem Peacemakers funded in part by AmeriCorps, trains young people who are committed to making their neighborhoods safe for children and families. The agency has Peacemakers working as teaching assistants in seven public schools and the HCZ Promise Academy charter school.

Public Middle School Programs

The *TRUCE Fitness and Nutrition Center* offers free classes to children in karate, fitness and dance. Participants also learn about health and nutrition, as well as receiving regular academic assistance. The program is focused on developing middle-school youth, grades 5-8.

A Cut Above is an after-school program that helps students in the critical-but-difficult middle-school years. Supporting students who are not in the HCZ Promise Academy charter school, it provides academic help, leadership development, as well as high school and college preparation.

Public High School Programs

TRUCE Arts & Media (The Renaissance University for Community Education) does youth development through the arts and media, working with youth in grades 9-12 on academic growth, career readiness as well as fostering media literacy and artistic ability.

The *Employment and Technology* center teaches computer and job-related skills to teens and adults.

Learn to Earn is an after-school program that helps high-school juniors and seniors improve their academic skills, as well as preparing them for college and the job market.

College Programs

The *College Success Office* supports students who have graduated from high school and HCZ programs. It helps them get into the most appropriate college, then assists them throughout their college years.

Family, Community and Health Programs

Community Pride organizes tenant and block associations, helping many hundreds of tenants convert their city-owned buildings into tenant-owned co-ops.

Single Stop offers access to a wide variety of services - from counseling to financial advice to legal consultations - at several locations each week.

The *HCZ Asthma Initiative* works closely with asthmatic children and their families so they can learn to manage the disease and lessen its effects.

The *Healthy Living Initiative* (formerly the Obesity Initiative) is a multi-pronged program to help children and their families reverse the alarming trend toward obesity and its health effects.

The Beacon Center Program

The *Beacon programs* turn school buildings into community centers, offering programs during the afternoon, evening and weekend. They offer programs for youth and adults from education to the arts to recreation. Each summer, they offer all-day camp so children have a safe, enriching place to spend their time instead of hanging out on the street.

Foster Care Prevention Services

The HCZ Foster Care Prevention programs work to stabilize and strengthen families so that their children are not placed in foster care. They include:

The *Family Development Program*, which serves 120 families and specializes in access to mental-health professionals who collaborate with caseworkers to support therapeutic interventions.

The *Family Support Center*, which serves 90 families, and specializes in providing crisis-intervention services, referrals, advocacy, as well as groups on parenting and anger management.

The *Midtown Family Place*, which has 45 families and is based in Hell's Kitchen. It provides counseling, referrals and advocacy, as well as an after-school and summer program for children ages 5-12, a literacy program, and a food pantry.

Project CLASS (Clean Living and Staying Sober), which serves as many as 50 families. It specializes in providing referrals to drug- and alcohol-abuse programs, as well as creating, implementing and monitoring drug- treatment service plans. It also includes the Babies Initiative, which is offered to 20 families with children ages five and under who are at immediate risk of

being put in foster care. This intensive program works to get family members whatever services they need in order to stabilize.

Truancy-Prevention, which has 90 families with at-risk children, and conducts groups on domestic violence, groups on parenting called the Parenting Journey, as well as a group for teenagers.

SCHOOL INVESTMENTS

Promise Academy Charter Schools in HCZ

The Promise Academy and Promise Academy II in HCZ provides a comprehensive college-preparatory educational program, with an extended school day and school year. Both Promise Academy and Promise Academy II will eventually serve children from kindergarten through twelfth grade, bringing a strong focus on literacy and mathematics (over two hours of literacy instruction and over 90 minutes of mathematics instruction each day) within a safe, structured and personalized environment. Each of the academies will be divided into four smaller “schools” (primary, elementary, middle, and high school) that will emphasize personalized relationships between students, teachers and families.

The academic day runs from 8 AM until 4 PM, approximately 20 percent longer than the vast majority of surrounding traditional public schools. Students also have the opportunity to participate in after-school programming from 4 PM – 6 PM. The academic year consists of 210 days of school, an increase over the 180 days required by law, which includes a 25-day mandatory summer program.

In 2006, a health clinic opened in the Promise Academy middle-school building so the students could get free medical, dental and mental-health services. The Harlem Children’s Health Project is a partnership of the Children’s Health Fund, the Mailman School of Public Health at Columbia University, New York-Presbyterian Hospital and HCZ. In addition, the clinic works with the elementary schools to identify children’s unmet health needs and to facilitate necessary care.

ONLINE ONLY – NOT FOR PUBLICATION

Appendix B: Data Appendix

Data for this project come from files at Harlem Children’s Zone and administrative data on student demographics and outcomes from the New York City Department of Education (NYCDOE). This appendix describes these data sets and details the procedures used to clean and match them.

Data Sets

A. Harlem Children’s Zone

The data from Harlem Children’s Zone consist of lottery files from the 2004 and 2005 elementary school lotteries and the 2005 and 2006 middle school lotteries, and student assessments from the Iowa Test of Basic of Skills for all Promise Academy students. A typical student’s data include her first name, last name, birth date, parents’ or guardians’ names, home address, lottery outcome, and ITBS achievement test scores. From the lottery files we exclude applicants with a sibling already enrolled in the Promise Academy (as they are automatically admitted) and applicants with sibling in the same lottery (as they have a higher chance of winning the lottery). Table 1 details the number of included applicants in each of the four lotteries.

We do not have data from the 2004 and 2008 middle school lotteries or elementary school lotteries after 2006. In the fall of 2007, Promise Academy did not enroll a new sixth-grade cohort. The 2008 middle school lottery was for entering 5th grade students, while all other middle school lotteries were for entering 6th grade students.

Promise Academy II held both a kindergarten and first-grade lottery their first year, enrolling 40 students in each grade. After their first year of operation, Promise Academy II relocated, and in the process lost a number of students. To simplify our analysis and abstract from the issues created by this relocation, we focus our analysis on the Promise Academy.

B. New York Department of Education Data

The NYCDOE data contain student-level administrative data on approximately 1.1 million students across the five boroughs of the NYC metropolitan area. The data include information on student race, gender, free and reduced-price lunch eligibility, attendance, and matriculation for all students and state math and ELA test scores for students in grades three through eight. The data also include a student’s first and last name, birth date, and address. We have NYCDOE data spanning the 2003 – 2004 to 2009 – 2010 school years, with data on test scores and demographic data through the 1999 – 2000 school year.

STATE ASSESSMENTS

The state math and ELA tests, developed by McGraw-Hill, are high-stakes exams conducted in the winters of third through eighth grade. Sample tests can be found at <http://www.emsc.nysed.gov/osa/testsample.html> Students in third, fifth, and seventh grades must score level 2 or above (out of 4) on both tests to advance to the next grade without attending summer school. The math test includes questions on number sense and operations, algebra, geometry, measurement, and statistics. Tests in the earlier grades emphasize more basic content such as number sense and operations, while later tests focus on advanced topics such as algebra and geometry. The ELA test is designed to assess students on three learning standards – information and understanding, literary response and expression, critical analysis and evaluation – and includes multiple-choice and short-response sections based on a reading and listening section, along with a brief editing task. Content breakdown by grade and additional exam information is available at <http://www.emsc.nysed.gov/osa/pub/reports.shtml>

All public-school students, including those attending charters, are required to take the math and ELA tests unless they are medically excused or have a severe disability. Students with moderate disabilities or who are English Language Learners must take both tests, but may be granted special

accommodations (additional time, translation services, and so on) at the discretion of school or state administrators. In our analysis the test scores are normalized to have a mean of zero and a standard deviation of one for each grade and year across the entire New York City sample. For students that are retained and retake the same test, we use the first available test score.

DEMOGRAPHIC VARIABLES

Demographic variables that should not vary from year to year (race, gender) were pulled from New York City test score files from 1999 - 2000 through 2009 - 2010, with precedence given to the most recent files. Race consisted of the following categories: black, Hispanic, and other race. These categories were considered mutually exclusive. Gender was coded as male, female, or missing.

Demographic variables that may vary from year to year (free lunch status, English Language Learner status, and special education designation) were pulled from the relevant NYC enrollment file. A student was considered eligible for free lunch if he was coded as “A” or “1” in the raw data, which corresponds to free lunch, or “2”, which corresponds to reduced-price lunch. A student was considered non-free lunch if the student was coded as a “3” in the NYC enrollment file, which corresponds to full price lunch. All other values, including blanks, were coded as missing. A student is income-eligible for free lunch if her family income is below 130 percent of the federal poverty guidelines, or categorically eligible if (1) the student’s household receives assistance under the Food Stamp Program, the Food Distribution Program on Indian Reservations (FDPIR), or the Temporary Assistance for Needy Children Program (TANF); (2) the student was enrolled in Head Start on the basis of meeting that program’s low-income criteria, (3) the student is homeless, (4) the student is a migrant child, or (5) the student is a runaway child receiving assistance from a program under the Runaway and Homeless Youth Act and is identified by the local educational liaison. A student is eligible for reduced-price lunch if family income is between 130 and 185 percent of federal poverty guidelines.

For English Language Learner status, a student was given a value of one if he was coded as “Y” for the limited English proficiency variable. All other students in the enrollment file were coded as zero for English Language Learner status. Special education was coded similarly.

ATTENDANCE

We construct measures of absenteeism and matriculation using the NYCDOE data. Absenteeism is measured as the total number of absences a student accumulates during the first 180 days of the school year. After the first 180 days, the NYCDOE no longer collects absence data from schools.

MATRICULATION

Matriculation is an indicator for whether a student is “on-time” given her expected grade. We impute an expected grade using the student’s birth date and New York law on school entry age.

DISTANCE TO BOUNDARY

Using the student addresses provided by the NYCDOE, we also calculated the distance from each student’s home to the nearest point on the boundary of the Harlem Children’s Zone using arcGIS. When multiple addresses were available for a single student, we use the earliest available address. Note that for all students the earliest available address is 2003 – 2004, as enrollment data is not available before this year. Another approach is to use the student’s address closest to the date of the lottery. The results are not sensitive to this alternative. A student is defined as living “in the Zone” if they live completely inside or touching the boundaries of the original 24-block Zone.

Match from the Harlem Children’s Zone Data to the NYCDOE Administrative Data

The HCZ data were matched to the New York City administrative data using the maximum amount of information available. Match keys were used in the following order: (1) last name, first name, date of birth with various versions of the names (abbreviations, alternative spellings, hyphenated vs. non-hyphenated); (2) last name, first name, and various versions of the date of birth (most often the month and

day reversed); (3) last name, first name, prior school, and prior grade with various likely adjustments to prior grade; (4) name, date of birth, and prior grade. Once these match keys had been run, the remaining data were matched by hand considering all available variables. Match rates were 95.0 percent for the winners of the kindergarten lottery (N=212), 95.3 percent for the losers of the kindergarten lottery (N=217), 93.0 percent for the winners of the middle-school lottery (N=211), and 88.8 percent for the losers of the middle-school lottery (N=401). These numbers are comparable to the match rates achieved by others using similar data (Hoxby and Murarka, 2009).

In our final elementary school sample we only include students for who we have test scores in 2009 – 2010, the most recent year available. Match rates to this sample were 84.1 percent for the winners of the kindergarten lottery (N=212), 78.4 percent for the losers of the kindergarten lottery (N=217). In our final middle school sample we only include students for who we have test scores through eighth grade, but include students who drop out in high school. Match rates to this sample 82.9 percent for the winners of the middle-school lottery (N=211), and 79.2 percent for the losers of the middle-school lottery (N=401). Details of the match rates for each lottery cohort are reported in Table 1.

Constructing the Sibling Data Set

We construct the sibling data set by linking students entered in Promise Academy middle school lottery to their siblings in other New York City schools, dropping the linked siblings if they are enrolled at the Promise Academy. Siblings are defined as any student pair who share a last name and address at least once between the 2003 – 2004 and 2009 – 2010 school years.

Appendix C: Cost-Benefit Calculation

This appendix describes the assumptions underlying our cost-benefit calculation.

Costs

The total per-pupil costs of the Promise Academy charter schools in HCZ can be calculated with relative ease. The New York Department of Education provided every charter school, including the Promise Academy, \$12,443 per pupil in 2008-2009. HCZ estimates that they added an additional \$4,657 per-pupil for in-school costs and approximately \$2,172 per pupil for after-school and “wrap-around” programs. This implies that HCZ spends \$19,272 per pupil at the Promise Academy. To put this in perspective, the median school district in New York State spent \$16,171 per pupil in 2006, and the district at the 95th percentile cutpoint spent \$33,521 per pupil (Zhou and Johnson, 2008).

Benefits of Achievement

There are relatively few studies relating test scores to later life outcomes. Currie and Thomas (2001) find that a one standard deviation increase in reading scores at age seven is associated with an 8.0 percent increase in wages at 33, and a one standard deviation increase in math scores is associated with 7.8 percent higher wages. Using our middle school lottery 2SLS estimates from Table 3 - 0.210 in math and 0.04 in ELA - suggests a $(0.210 * 7.6 + 0.04 * 0.8) = 1.6$ percent increase in wages for every year a student is enrolled at the Promise Academy. Neal and Johnson (1996) find that a one standard deviation increase in AFQT scores at ages 15 – 18 is associated with a 20 percent increase in wages at ages 26 to 29. Taking an average of the estimated HCZ effect across math and reading, this corresponds to a $(0.125 * 0.2) = 2.5$ percent increase in wages.¹⁵ Levitt and Lochner (2001) find that a one-quartile increase in AFQT scores is associated with a 3 to 4 percent decrease in self-reported property and violent crime participation. Assuming normality and using the average effect across both math and reading, this implies a $(0.125/0.67) * (0.03 \text{ to } 0.04) = 0.55 \text{ to } 0.75$ percent decrease in criminal participation for each year a student is enrolled. Auld and Sidhu (2005) find that a one standard deviation increase in AFQT scores is associated with a 20 to 30 percent decrease in the probability of reporting a health limitation, implying a $(0.125) * (0.2 \text{ to } 0.3) = 2.5 \text{ to } 3.75$ percent decrease for each year a student is enrolled at the Promise Academy. Elias (2005) and Kaestner (2009) report similar findings using self-reported health status.

Benefits of Attainment

If the Promise Academy affects educational attainment as dramatically as achievement, the implied benefits are enormous (Angrist and Krueger, 1991; Card, 1999; Lantz et al., 1998; Card, 2001; Lochner and Moretti, 2004; Pettit and Western, 2004; Lleras-Muney, 2005; Belfield, 2006; Cutler and Lleras-Muney, 2006; Rouse, 2006; Levin et al., 2007; Oreopoulos, 2007; Kaestner, 2009). The public benefits alone would more than justify the costs. Using 2003 and 2004 Current Population Survey (CPS) data and the NBER TAXSIM, Rouse (2006) finds that present value lifetime earnings at age 20 of black male high school dropouts are \$292,200 versus \$601,800 for high school graduates--this means that the average black male dropout contributes \$118,000 in income taxes over his lifetime versus \$222,400 for a high school graduate. Accounting for property and sales taxes increases these figures by 5 percent.

¹⁵ Kruger (2003) suggests three reasons why Neal and Johnson (1996) find a larger effect of test scores on wages than Currie and Thomas (2001). First, students were older when they took the AFQT exam, and there is evidence of mean regression in test scores. Second, Currie and Thomas simultaneously enter the highly correlated reading and mathematics scores in the wage regression, whereas Neal and Johnson (1996) use just a single test score. Finally, the British and American labor markets are different in ways that may change the correlation between test scores and wages.

Overall, each additional black male high school graduate would produce a present value at age 20 of \$167,600 in additional tax revenue. Using data from the 2002 Medical Expenditure Panel Survey (MEPS) combined with enrollment costs from the National Health Accounts (NHA), Levin et al. (2007) estimate that over the lifetime, each additional high school graduate would result in savings in public health costs with a net present value of \$33,500 at age 20. Using data from the Bureau of Justice Statistics as well as FBI Uniform Crime Rate data, Belfield (2006) estimates that converting a black male high school dropout to a graduate is associated with criminal justice cost savings of \$55,500. Taken together, this implies a public benefit of approximately \$256,700 per new high school graduate.

References

Aaronson, Daniel, Lisa Barrow and William Sander (2007) "Teachers and Student Achievement in the Chicago Public High Schools." *Journal of Labor Economics*, 25(1): 95 – 135.

Abdulkadiroglu, Atila, Joshua Angrist, Sarah Cohodes, Susan Dynarski, Jon Fullerton, Thomas Kane and Parag Pathak (2009) "Informing the Debate: Comparing Boston's Charter, Pilot and Traditional Schools." Boston Foundation Report.

Achilles, Charles M., Barbara A. Nye, Jayne B. Zaharias, and B. DeWayne Fulton (1993) "The lasting benefits study (LBS) in grades 4 and 5 (1990-91): A legacy from Tennessee's four-year (K-3) class size study (1985-1989), Project STAR." HEROS, Inc.

Anderson, Michael (2008) "Multiple Inference and Gender Differences in the Effects of Early Intervention: A Reevaluation of the Abecedarian, Perry Preschool, and Early Training Projects." *Journal of the American Statistical Association*, forthcoming.

Angrist, Joshua D., Susan M. Dynarski, Thomas J. Kane, Parag A. Pathak, and Christopher R. Walters. (2010) "Who Benefits from KIPP?" NBER Working Paper No. 15740.

Angrist, Joshua, and Alan Krueger (1991) "Does Compulsory School Attendance Affect Schooling and Earnings?" *The Quarterly Journal of Economics*, 106 (4): 979-1014.

Angrist, Joshua D., and Kevin Lang (2004) "How Important Are Peer Effects? Evidence from Boston's Metco Program," *American Economic Review*, 94: 1613-34.

Auld, Christopher and Nirmal Sidhu (2005), "Schooling and Cognitive Ability." *Health Economics*, 14(10): 1013-1034.

Banerjee, Abhijit, Shawn Cole, Esther Duflo, and Leigh Linden (2007) "Remedying Education: Evidence from Two Randomized Experiments in India," *Quarterly Journal of Economics*, 122(3): 1235-1264.

Bedard, Kelly (2003) "School Quality and the Distribution of Male Earnings in Canada." *Economics of Education Review*, 22(4): 395 – 407.

Belfield, Clive R. (2006) "The consequences of raising the graduation rate for black males: The effects on crime," Working paper, Teachers College, New York.

Bertrand, Marianne, Esther Duflo, and Sendhil Mullainathan (2004) "How Much Should We Trust Differences-in-Differences Estimates?" *Quarterly Journal of Economics*, 119(1): 249-275.

Betts, Julian (1995) "Does School Quality Matter? Evidence from the National Longitudinal Survey of Youth," *Review of Economics and Statistics* 77 (2): 231-250.

Black, Sandra, Paul Devereux, Kjell Salvanes. "Staying In the Classroom and Out of the Maternity Ward? The Effects of Compulsory Schooling Laws on Teenage Births." *Economic Journal*, 118(530): 1025 – 1054.

Borman, Geoffrey D., and Gina M. Hewes (2003) "The long-term effects and cost-effectiveness of Success for All." *Educational Evaluation and Policy Analysis*, 24: 243-266

Borman, Geoffrey D., Robert E. Slavin, Alan C.K. Cheun, Anne M. Chamberlain, Nancy A. Madden, and Bette Chambers (2007) "Final reading outcomes of the National Randomized Field Trial of Success for All." *American Educational Research Journal*, 44(3): 701-731.

Campbell, Jay, Catherine Hombo, and John Mazzeo (2000) "NAEP 1999 Trends in Academic Progress: Three Decades of Student Performance." NCEES 2000-469. Washington, DC: U.S. Department of Education, National Center for Education Statistics.

Card, David and Alan Krueger (1992) "Does School Quality Matter? Returns to Education and the Characteristics of Public Schools in the United States," *Journal of Political Economy*, 100(1): 1 – 40.

Card, David (1999) "The Causal Effect of Education on Earnings," in Card, David, and Ashenfelter, Orley (eds.), *Handbook of Labor Economics*, Vol. 3, (1802-1859).

Card, David (2001) "Estimating the Returns to Schooling: Progress on Some Persistent Econometric Problems," *Econometrica*, 69 (5): 1127-1160.

Card, David, and Jesse Rothstein (2007) "Racial Segregation and the Black-White Test Score Gap." *Journal of Public Economics* 91(11-12): 2158-2184.

Carneiro, Pedro, and James Heckman (2002) "Human Capital Policy," University of Chicago working paper.

Carter, Samuel Casey (2000) *No Excuses: Lessons from 21 High-Performing, High-Poverty Schools*. Washington, D.C.: Heritage Foundation.

Case, Ann and Motohiro Yogo (1999) "Does School Quality Matter? Returns to Education and the Characteristics of Schools in South Africa," NBER Working Paper No. 7399.

Chenoweth, Karin (2007) *It's Being Done: Academic Success in Unexpected Schools*. Cambridge, MA: Harvard Education Press.

Chetty, Raj, John Friedman, Nathaniel Hilger, Emmanuel Saez, Diane Whitmore Schanzenbach, and Danny Yagan (2010) "How Does your Kindergarten Classroom Affect Your Earnings? Evidence from Project STAR." NBER Working Paper 16381.

Clark, Damon (2007) "Selective Schools and Academic Achievement." IZA Discussion Paper No. 3182.

Coleman, James, Ernest Campbell, Carol Hobson, James McPartland, Alexander Mood, Frederic Weinfeld, and Robert York (1966) *Equality of Educational Opportunity*. Washington, DC: U.S. Government Printing Office.

Cook, Thomas D., H. David Hunt, and Robert F. Murphy (2000) "Comer's School Development Program in Chicago: A theory-based evaluation." *American Educational Research Journal* 37(2): 535-597.

Cullen, Julie Berry, Brian A. Jacob, and Steven D. Levitt (2005) "The Impact of School Choice on Student Outcomes: An Analysis of the Chicago Public Schools." *Journal of Public Economics*, Volume 89(5-6): 729– 760.

Currie, Janet, and Duncan Thomas (1995) "Does Head Start Make a Difference?" *American Economic Review* 85(3), 341–364

Currie, Janet and Duncan Thomas (2000) "School Quality And The Longer-Term Effects Of Head Start," *Journal of Human Resources*, 35(4): 755-774.

Currie, Janet, and Duncan Thomas (2001), "Early Test Scores, School Quality and SES: Long Run Effects on Wage and Employment Outcomes," in Polachek, Solomon W. (Ed.), *Worker wellbeing in a changing labor market*, Kidlington, Oxford: Elsevier Science Ltd.

Cutler, David, and Adriana Lleras-Muney (2006). "Education and Health: Evaluating Theories and Evidence," NBER Working Paper No. 12352.

Decker, Paul, Daniel Mayer and Steven Glaserman (2004) "The Effects of Teach for America on Students: Findings from a National Evaluation." Mathematica Policy Research Report No. 8792-750, June 9, 2004.

Deming, David (2009) "Early Childhood Intervention and Life-Cycle Skill Development: Evidence from Head Start." Forthcoming in *American Economic Journal: Applied Economics*

Deming, David (2010) "Better School, Less Crime?" Unpublished draft.

Deming, David, Justine Hastings, Thomas Kane and Douglas Staiger (2009) "School Choice and College Attendance: Evidence from Randomized Lotteries." Unpublished Working Paper.

Duckworth, Angela, Christopher Peterson, Michael Matthews and Dennis Kelly (2006) "Grit: Perseverance and Passion for Long-Term Goals." Mimeo University of Pennsylvania.

Duckworth, Angela, Patrick Quinn, Donald Lynam, Rolf Loeber, Magda Stouthamer-Loeber, Terrie Moffit, and Avshalom Caspi (2007) "What intelligence tests test: Individual differences in test motivation and IQ." Mimeo University of Pennsylvania.

Dobbie, Will and Roland Fryer (2010) "Are High-Quality Schools Enough to Increase Achievement Among the Poor? Evidence from the Harlem Children's Zone." Unpublished Working Paper.

Elias, Julio (2005), "The Effects of Ability and Family Background on Non-monetary Returns to Education." University of Chicago Working Paper.

Figlio, David and Lawrence Kenny (2006) "Individual Teacher Incentives and Student Performance." *Journal of Public Economics*, 91(5-6): 901 – 914.

Fryer, Roland (forthcoming), "Racial Inequality in the 21st Century: The Declining Significance of Discrimination," *Handbook of Labor Economics Volume 4*.

Fryer, Roland (2010a) "Financial Incentives and Student Achievement: Evidence from Randomized Trials." NBER Working Paper 15898.

Fryer, Roland (2010b) "School-Based Merit Pay: An Experiment in 200 New York City Public Schools." Unpublished draft. Harvard University.

Fryer, Roland, and Steven Levitt (2004) "Understanding the Black-White Test Score Gap in the First Two Years of School." *The Review of Economics and Statistics*, 86(2): 447-464.

- Fryer, Roland, and Steven Levitt (2006) "The Black-White Test Score Gap Through Third Grade." *American Law and Economic Review*, 8(2): 249-281.
- Fryer, Roland, and Steven Levitt (forthcoming) "Testing for Racial Differences in the Mental Ability of Young Children." *American Economic Review*
- Gould, Eric, Victor Lavy and Daniele Paserman (2004) "Immigrating to Opportunity: Estimating the Effect of School Quality Using a Natural Experiment on Ethiopians in Israel." *Quarterly Journal of Economics*, 119(2): 489 – 526.
- Hanushek, Eric, John Kain, Steven Rivkin, and Gregory Branch (2005) "Charter School Quality and Parental Decision Making with School Choice." NBER Working Paper 11252.
- Hanushek, Eric and Steven Rivkin (2005) "Teachers, Schools and Academic Achievement." *Econometrica*, 73(2): 417 – 458.
- Hart, Betty and Todd Risley (1995). *Meaningful Differences in the Everyday Experience of Young American Children*. Baltimore, MD: Brookes Publishing.
- Hastings, Justine, Thomas Kane, and Douglas Staiger (2006) "Gender and Performance: Evidence from School Assignment by Randomized Lottery." *American Economic Review*, 96(2): 232-236.
- Heckman, James, Anne Layne-Farrar and Petra Todd (1996) "Does Measured School Quality Really Matter? An Examination of the Earnings-Quality Relationship," (pp. 141-191) in Gary Burtless (Eds.), *Does Money Matter?: The Effect of School Resources on Student Achievement and Adult Success*. Washington, DC: The Brookings Institute.
- Hopkins, Kenneth and Glenn Bracht (1975) "Ten-Year Stability of Verbal and Nonverbal IQ Scores." *American Educational Research Journal*, 12(4): 469–477.
- Hoxby, Caroline, and Sonali Murarka (2009) "Charter Schools In New York City: Who Enrolls and How They Affect Their Students' Achievement." NBER Working Paper 14852.
- Hoxby, Caroline, and Jonah Rockoff (2004) "The Impact of Charter Schools on Student Achievement." Working Paper
- Jacob, Brian (2005) "Accountability, Incentives and Behavior: Evidence from School Reform in Chicago." *Journal of Public Economics*, 89(5-6): 761-796.
- Jacob, Brian, and Lars Lefgren (2004) "Remedial Education and Student Achievement: A Regression-Discontinuity Analysis." *Review of Economics and Statistics*, 86(1): 226-244
- Jacob, Brian, and Steven Levitt (2003) "Rotten Apples: An Investigation of the Prevalence and Predictors of Teacher Cheating." *Quarterly Journal of Economics* 117(3): 843-878.
- Jacob, Brian, and Jens Ludwig (2008) "Improving Educational Outcomes for Poor Children." NBER Working Paper 14550.
- Jepsen, Christopher, and Steven G. Rivkin (2002) "What is the Tradeoff Between Smaller Classes and Teacher Quality?" NBER Working Paper 9205.

Jencks, Christopher, and Meredith Phillips (1998) "America's Next Achievement Test: Closing the Black-White Test Score Gap," *American Prospect*, 40: 44–53.

Kaestner, Robert (2009), "Adolescent Cognitive and Non-Cognitive Correlates of Adult Health," NBER Working Paper 14924.

Kane, Thomas, Jonah Rockoff and Douglas Staiger (2008) "What does certification tell us about teacher effectiveness? Evidence from New York City." *Economics of Education Review*, 27(6): 615-631.

Kane, Thomas, and Douglas Staiger (2008) "Estimating Teacher Impacts on Student Achievement: An Experimental Validation." NBER Working Paper 14607.

Katz, Lawrence, Jeffrey Kling, and Jeffrey Liebman (2001) "Moving to Opportunity in Boston: Early Results of a Randomized Mobility Experiment." *Quarterly Journal of Economics*, 116(2): 607-654.

Kendziora, Kimberly, Wehmah Jones, Delphinia Brown, David Osher, Marc Rudolph, Katje King, Shefali Trivedi, and Pam Cantor (2008) "Safe Schools, Successful Students Initiative: Final Report to the United Way."

Kling, Jeffrey, Jeffrey Liebman, and Lawrence Katz (2007) "Experimental Analysis of Neighborhood Effects." *Econometrica*, 75(1): 83–119.

Knudsen, Eric, James Heckman, Judy Cameron, and Jack Shonkoff (2006) "Economic, neurobiological, and behavioral perspectives on building America's future workforce." *Proceedings of the National Academy of Sciences*, 103(27): 10155–10162.

Krueger, Alan (1999) "Experimental Estimates of Education Production Functions." *Quarterly Journal of Economics*, 114(2): 497-532

Krueger, Alan, and Pei Zhu (2004) "Another Look at the New York City School Voucher Experiment." *American Behavioral Scientist*, 47(5): 658-698

Krueger, Alan, and Diane Whitmore (2001) The Effect of Attending a Small Class in the Early Grades on College Test-Taking and Middle School Test Results: Evidence from Project STAR. *Economic Journal*, 111 (January), 1-28.

Lantz, P. M., House, J. S., Lepkowski, J. M., Williams, D. R., Mero, R. P., and Chen, J. (1998) "Socioeconomic factors, health behaviors, and mortality: Results from a nationally representative prospective study of US adults." *Journal of the American Medical Association*, 279: 1703–1708.

Lauer, Patricia, Motoko Akiba, Stephanie Wilkerson, Helen Aphorpe, David Snow, and Mya Martin-Glenn (2002) "Out-of-School-Time Programs: A Meta-Analysis of Effects for At-Risk Students." *Review of Educational Research*, 76(2): 275-313

Lavy, Victor (2009) "Performance Pay and Teachers' Effort, Productivity, and Grading Ethics." *American Economic Review*, 99(5): 1979 – 2011.

Levin, Henry M., Clive Belfield, Peter Muennig, and Cecilia Rouse (2007) "The public returns to public educational investments in African-American males," *Economics of Education Review* 26 (2007): 700-709.

- Levitt, Steve, and Lance Lochner (2001) "The determinants of juvenile crime," in J. Gruber (Ed.), *Risky Behavior Among Youths: An Economic Analysis* (327-373). Chicago: University of Chicago Press.
- Lleras-Muney, Adriana (2005) "The Relationship between Education and Adult Mortality in the United States," *Review of Economic Studies*, 72 (1): 189-221.
- Lochner, Lance, and Enrico Moretti (2004) "The effect of education on crime: Evidence from prison inmates, arrests, and self-reports," *American Economic Review*, 94: 155–189.
- Ludwig, Jens and Deborah Phillips (2007) "The Benefits and Costs of Head Start." NBER Working Paper 12973.
- Ludwig, Jens and Douglas Miller (2007) "Does Head Start Improve Children's Life Chances? Evidence from a Regression Discontinuity Design." *The Quarterly Journal of Economics*, 122(1): 159-208
- Neal, Derek and William Johnson (1996), "The role of premarket factors in black-white wage differentials." *Journal of Political Economy*, 104: 869–95.
- Neal, Derek (2006) "Why Has Black-White Skill Convergence Stopped?" *Handbook of Economics of Education*, edited by Eric Hanushek and Finis Welch, Elsevier.
- Nelson, Charles (2000) "The Neurobiological Bases of Early Intervention." In Jack Shonkoff and Deborah Phillips (Eds.), *Handbook of Early Childhood Intervention* (2nd edition). New York: Cambridge University Press.
- Newport, Elissa (1990) "Maturational Constraints on Language Learning." *Cognitive Science*, 14(1, Special Issue): 11–28.
- Nye, Barbara, B. DeWayne Fulton, Jayne Boyd-Zaharias, and Van A. Cain (1995) "The Lasting Benefits Study, Eighth Grade Technical Report." Nashville, TN: Center for Excellence for Research in Basic Skills, Tennessee State University.
- Olds, David (2006) "The Nurse-Family Partnership." In N.F. Watt, C. Ayoub, R.H. Bradley, J.E. Puma, and W.A. LeBoeuf (Eds.), *The Crisis in Youth Mental Health: Early Intervention Programs and Policies* (pps. 147-180). Westport, CT: Praeger.
- Oreopoulos, Philip (2007) "Do dropouts drop out too soon? Wealth, health and happiness from compulsory schooling," *Journal of Public Economics*, 91 (11-12): 2213-2229.
- Pettit, Becky, and Bruce Western (2004) "Mass imprisonment and the life course: Race and class inequality in US incarceration," *American Sociological Review*, 69: 151–169.
- Phillips, Meredith, James Crouse, and John Ralph (1998) "Does the Black-White Test Score Gap Widen after Children Enter School?" (pp. 229–272), in Christopher Jencks and Meredith Phillips (Eds.), *The Black-White Test Score Gap*. Washington, DC: The Brookings Institute.
- Pinker, Steven (1994) *The Language Instinct: How the Mind Creates Language*. New York: W. Morrow and Co.
- Podgursky, Michael J., and Matthew G. Springer (2007) "Teacher Performance Pay: A Review." *Journal of Policy Analysis and Management*, 26(4), 909-950.

Redd, Zakia, Stephanie Cochran, Elizabeth Hair, and Kristin Moore (2002) “Academic Achievement Programs and Youth Development: A Synthesis.” Child Trends, Washington D.C.

Rockoff, Jonah E. (2004) “The Impact of Individual Teachers on Student Achievement: Evidence from Panel Data.” *American Economic Review*, 94(2): 247–252.

Rouse, Cecilia Elena (1998) “Private School Vouchers and Student Achievement: An Evaluation of the Milwaukee Parental Choice Program.” *Quarterly Journal of Economics*, 113(2): 553-602.

Rouse, Cecilia Elena (2006) “The economic consequences of inadequate education for black males: The effects on labor market income and tax revenue.” Working paper, Teachers College Equity Symposium.

Sanbonmatsu, Lisa, Jeffrey Kling, Greg Duncan and Jeanne Brooks-Gunn (2006) “Neighborhoods and Academic Achievement: Results from the Moving to Opportunity Experiment.” *Journal of Human Resources*, 41(4): 649 – 691.

Segal, Carmit (2008) “Motivation, Test Scores, and Economic Success.” UPF Working Paper 1124.

Tough, Paul (2008) *Whatever it Takes: Geoffrey Canada’s Quest to Change Harlem and America*. New York City, NY: Houghton Mifflin Company.

Zhou, Lei and Frank Johnson (2008) “Revenues and Expenditures for Public Elementary and Secondary School Districts: School Year 2005–06, Fiscal Year 2006 (NCES 2008–345).” National Center for Education Statistics, Institute of Education Sciences, U.S. Department of Education. Washington, DC.

Figure 1
The Harlem Children's Zone



Notes: Phase one of HCZ is bounded by 116th Street, 123rd Street, 5th Avenue and 8th Avenue. The second phase includes 124th to 132nd Streets, and extends the eastern boundary (in both areas) to Madison Avenue. The third phase includes 133rd to 143rd Streets, Madison to 8th Avenues.

Table 1
Lottery and Match Summary

Lottery Grade	Lottery Year	Grades Observed	Lottery Sample	Distance Sample	Number of Winners	Winner Match Rate	Fraction in Final Data	Number of Losers	Loser Match Rate	Fraction in Final Data
K	2004	3rd - 5th	Y	Y	94	0.95	0.88	37	0.92	0.76
K	2005	3rd - 4th	Y	Y	118	0.95	0.81	180	0.96	0.79
K	2006	3rd	N	Y	-	-	-	-	-	-
6th	2004	6th - 8th	N	Y	-	-	-	-	-	-
6th	2005	6th - 8th	Y	Y	107	0.93	0.79	228	0.91	0.78
6th	2006	6th - 8th	Y	Y	104	0.93	0.87	173	0.86	0.81
5th	2008	5th - 6th	N	Y	-	-	-	-	-	-

Notes: This table summarizes the match from the Promise Academy Lottery Data to the NYCDOE administrative data. The sample is restricted to students entered in the Kindergarten or sixth grade lotteries from 2004 through 2006. We do not have lottery data from the 2004 6th grade lottery, the 2006 Kindergarten lottery. The initial match rate is to any year of the NYCDOE data. The final sample for the middle school sample is restricted to students with test score data through 8th grade. The final sample for the elementary school sample is restricted to students with test score data in 2009 - 2010, the most recent year available. Students with sibling preference are dropped. For the middle school, a lottery winner is defined as either having a winning lottery number or having a waitlist number that is below the average highest number across all years. For the elementary school, a lottery winner is defined as being offered a spot before the start of the school year.

Table 2
Summary Statistics of Lottery Sample

Youth characteristics	NYC	HCZ	Kindergarten Lottery			Middle School Lottery		
			Winners	Losers	Difference	Winners	Losers	Difference
Male	0.514	0.512	0.531	0.535	0.026	0.528	0.451	0.078*
White	0.133	0.024	0.000	0.006	-0.005	0.006	0.003	0.002
Black	0.316	0.728	0.847	0.812	0.037	0.847	0.834	0.019
Hispanic	0.398	0.210	0.153	0.171	-0.017	0.142	0.147	-0.010
Free or Reduced Price Lunch	0.620	0.679	0.751	0.682	0.050	0.790	0.696	0.089**
5th Grade Math Score	0.005	-0.304	-	-	-	-0.251	-0.313	0.072
5th Grade ELA Score	-0.007	-0.243	-	-	-	-0.216	-0.284	0.075
5th Grade Special Ed	0.107	0.139	-	-	-	0.037	0.052	-0.016
5th Grade LEP	0.117	0.071	-	-	-	0.037	0.038	-0.004
School characteristics								
Attended Promise Academy	0.001	0.052	0.599	0.253	0.256***	0.699	0.066	0.638***
Attended any Charter School	0.028	0.226	0.740	0.629	0.113**	0.756	0.213	0.537***
Male	0.514	0.504	0.505	0.510	-0.006	0.497	0.483	0.014
White	0.133	0.055	0.025	0.037	-0.011	0.021	0.035	-0.014**
Black	0.316	0.547	0.736	0.663	0.058**	0.695	0.482	0.211***
Hispanic	0.397	0.343	0.202	0.257	-0.040*	0.243	0.440	-0.195***
Free or Reduced Price Lunch	0.620	0.687	0.772	0.733	0.032	0.788	0.703	0.085***
5th Grade Math Score	-0.033	-0.262	-	-	-	-0.247	-0.261	0.017
5th Grade ELA Score	-0.041	-0.191	-	-	-	-0.226	-0.250	0.026
5th Grade Special Ed	0.110	0.116	-	-	-	0.051	0.097	-0.047***
5th Grade LEP	0.126	0.116	-	-	-	0.060	0.101	-0.041***
Observations	986930	2770	177	170	347	176	319	495

Notes: HCZ refers to the original 24-block area of HCZ, ranging from 116th to 123rd Streets, 5th Avenue to 8th Avenue. NYC refers to the universe of New York City public-school students. A lottery winner is defined as either having a winning lottery number or having a waitlist number that is below the average highest number across all years. School characteristics are from the 2009 - 2010 school year.

Table 3
Middle School Results

	Lottery RF	Lottery FS	Lottery 2SLS	Distance 2SLS
Math	0.284*** (0.050)	1.240*** (0.075)	0.229*** (0.037)	0.206** (0.092)
ELA	0.059 (0.041)	1.241*** (0.074)	0.047 (0.033)	-0.053 (0.049)
Absences	-2.783*** (0.833)	1.260*** (0.079)	-2.199*** (0.650)	-0.220 (2.544)
On Grade Level	-0.003 (0.022)	1.240*** (0.075)	-0.002 (0.017)	-0.011 (0.036)
Observations	1449	1449	1449	41029

Notes: This table reports first stage, reduced-form and instrumental variable estimates for the Promise Academy Charter School. The sample for columns 1 through 3 is restricted to students in the middle school lottery with no sibling preference and who have data for all grades. The sample for column 4 is restricted to students living within 800 meters of the original 24-block HCZ. All regressions pool outcomes for grades 6 through 8, and control for grade and year of test effects, gender, race, lunch status, previous test scores, previous special education status and whether the student previously spoke English as second language. Column 3 report two stage least squares coefficients using lottery offer as an instrumental variable. Column 4 reports two stage least squares coefficients using the interaction between cohort and living within the 24-block HCZ as an instrumental variable. The table reports standard errors clustered at the student level in columns 1 through 3. The standard errors in column 4 allow for two-way clustering at the student and cohort level. Test scores are standardized to have mean zero and standard deviation one by grade in the full New York City sample. *** = significant at 1 percent level, ** = significant at 5 percent level, * = significant at 10 percent level.

Table 4
Middle School Subsample Results

	Male	Female	Free Lunch	Not Free Lunch	Above Median	Below Median
Math	0.220*** (0.050)	0.238*** (0.053)	0.227*** (0.042)	0.236*** (0.079)	0.254*** (0.051)	0.203*** (0.046)
ELA	0.056 (0.052)	0.059 (0.059)	0.037 (0.046)	0.134* (0.076)	0.191*** (0.054)	-0.096* (0.051)
Absences	-1.615* (0.886)	-2.779*** (0.883)	-2.181*** (0.703)	-2.283 (1.636)	-3.077*** (0.739)	-1.182 (0.857)
On Grade Level	-0.002 (0.023)	-0.002 (0.027)	-0.004 (0.019)	0.006 (0.042)	0.025 (0.017)	-0.034 (0.025)
Observations	727	782	1120	389	699	686

Notes: This table reports instrumental variable estimates for subsamples at the Promise Academy Charter School. The sample is restricted to students in the middle school lottery with data on the relevant characteristic, with no sibling preference, and who have data for all grades. All regressions pool outcomes for grades 6 through 8 in both groups, and control for grade and year of test effects, gender, race, lunch status, previous test scores, previous special education status and whether the student previously spoke English as second language. We report two stage least squares coefficients interacted with the identified characteristic using lottery offer as an instrumental variable. The table reports standard errors clustered at the student level. Test scores are standardized to have mean zero and standard deviation one by grade in the full New York City sample. *** = significant at 1 percent level, ** = significant at 5 percent level, * = significant at 10 percent level.

Table 5
Elementary School Results

	Lottery RF	Lottery FS	Lottery 2SLS	Distance 2SLS
Math	0.160 (0.097)	0.834*** (0.253)	0.191 (0.116)	0.324*** (0.084)
ELA	0.095 (0.083)	0.834*** (0.253)	0.114 (0.095)	0.420*** (0.075)
Absences	-2.045* (1.178)	0.834*** (0.253)	-2.412* (1.413)	-2.533*** (0.550)
On Grade Level	0.016 (0.027)	0.834*** (0.253)	0.019 (0.033)	-0.058*** (0.020)
Observations	748	748	748	34148

Notes: This table reports first stage, reduced-form and instrumental variable estimates for the Promise Academy Charter School. The sample for columns 1 through 3 is restricted to students in the elementary school lottery with no sibling preference who are in the most recent year of data. The sample for column 4 is restricted to students living within 800 meters of the original 24-block HCZ. All regressions pool outcomes for grades 3 through 5, and control for grade and year of test effects, gender, race, and lunch status. Column 3 report two stage least squares coefficients using lottery offer as an instrumental variable. Column 4 reports two stage least squares coefficients using the interaction between cohort and living within the 24-block HCZ as an instrumental variable. The table reports standard errors clustered at the student level in columns 1 through 3. The standard errors in column 4 allow for two-way clustering at the student and cohort level. Test scores are standardized to have mean zero and standard deviation one by grade in the full New York City sample. *** = significant at 1 percent level, ** = significant at 5 percent level, * = significant at 10 percent level.

Table 6
Elementary School Subsample Results

	Male	Female	Free Lunch	Not Free Lunch
Math	0.232** (0.114)	0.132 (0.144)	0.160 (0.114)	0.576 (0.445)
ELA	0.168* (0.096)	0.034 (0.118)	0.094 (0.091)	0.357 (0.331)
Absences	-3.171** (1.541)	-1.341 (1.687)	-2.319* (1.343)	-3.309 (3.383)
On Grade Level	0.030 (0.035)	0.000 (0.042)	0.012 (0.033)	0.095 (0.111)
Observations	390	371	550	211

Notes: This table reports instrumental variable estimates for subsamples at the Promise Academy Charter School. The sample is restricted to students in the elementary school lottery with data on the relevant characteristic. All regressions pool outcomes for grades 3 through 4 in both groups, and control for grade and year of test effects, gender, race, and lunch status. We report two stage least squares coefficients interacted with the identified characteristic using lottery offer as an instrumental variable. The table reports standard errors clustered at the student level. Test scores are standardized to have mean zero and standard deviation one by grade in the full New York City sample. *** = significant at 1 percent level, ** = significant at 5 percent level, * = significant at 10 percent level.

Table 7
Middle School In and Out of the Zone

	In Zone	Out of Zone	
Math	0.201*** (0.051)	0.241*** (0.042)	0.468
ELA	0.067 (0.045)	0.039 (0.037)	0.577
Absences	-1.300 (1.003)	-2.601*** (0.683)	0.183
On Grade Level	0.013 (0.024)	-0.009 (0.020)	0.414
Observations	471	1038	

Notes: This table reports instrumental variable estimates for students living near and not near the original HCZ. The sample is restricted to students in the middle school lottery with no sibling preference and who have data for all grades. All regressions pool outcomes for grades 6 through 8 in both groups, and control for grade and year of test effects, gender, race, lunch status, previous test scores, previous special education status and whether the student previously spoke English as second language. We report two stage least squares coefficients interacted with a variable equal to one if the student lives within 400 meters of the original 24-block HCZ, using lottery offer as an instrumental variable. The table reports standard errors clustered at the student level. Test scores are standardized to have mean zero and standard deviation one by grade in the full New York City sample. *** = significant at 1 percent level, ** = significant at 5 percent level, * = significant at 10 percent level.

Table 8
Elementary School In and Out of the Zone

	In Zone	Out of Zone	
Math	0.204 (0.164)	0.193 (0.123)	0.863
ELA	0.161 (0.139)	0.121 (0.100)	0.492
Absences	-2.932 (2.110)	-2.464 (1.503)	0.577
On Grade Level	0.054 (0.047)	0.025 (0.036)	0.046
Observations	254	507	

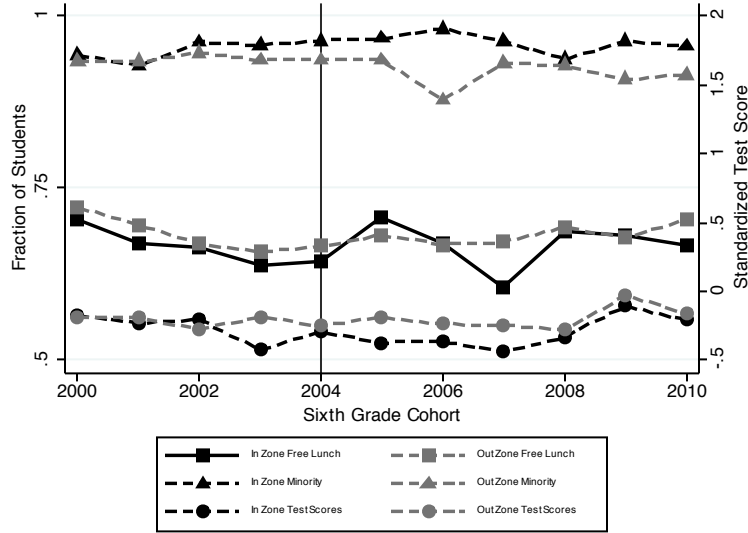
Notes: This table reports instrumental variable estimates for students living near and not near the original HCZ. The sample is restricted to students in the elementary school lottery with no sibling preference and who have data for all grades. All regressions pool outcomes for grades 3 through 5 in both groups, and control for grade and year of test effects, gender, race, lunch status, previous test scores, previous special education status and whether the student previously spoke English as second language. We report two stage least squares coefficients interacted with a variable equal to one if the student lives within 400 meters of the original 24-block HCZ, using lottery offer as an instrumental variable. The table reports standard errors clustered at the student level. Test scores are standardized to have mean zero and standard deviation one by grade in the full New York City sample. *** = significant at 1 percent level, ** = significant at 5 percent level, * = significant at 10 percent level.

Table 9
Middle School Sibling Results

	All Lottery	Without Siblings	With Siblings	Sibling Spillovers
Math	0.229*** (0.037)	0.249*** (0.044)	0.178*** (0.067)	0.051 (0.119)
ELA	0.047 (0.033)	0.050 (0.038)	0.051 (0.059)	0.087 (0.113)
Absences	-2.199*** (0.650)	-2.181*** (0.744)	-2.227 (1.355)	0.694 (1.559)
On Grade Level	-0.002 (0.017)	-0.009 (0.021)	0.029 (0.025)	-0.022 (0.047)
Observations	1449	1055	394	512

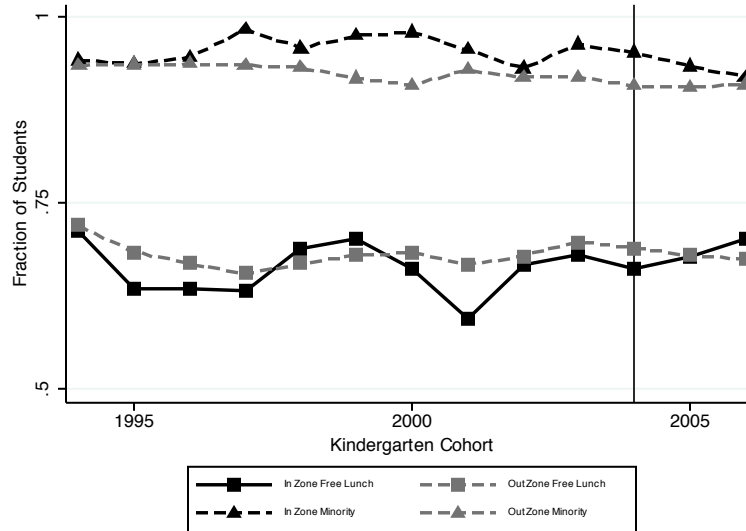
Notes: This table reports instrumental variable estimates of spillover effects at the Promise Academy Charter School. Column 1 presents our main middle school results. Columns 2 and 3 presents main results for the sample of middle school students without and with older siblings. Column 4 presents results of the spillover effect of attending the Promise Academy on sibling outcomes. The sample for column 4 is restricted to older siblings of students entered in either the 2005 or 2006 middle school lottery who had no sibling preference and who had data for all grades. All regressions pool outcomes across grades, and control for grade, year, gender, race, lunch status, previous test scores, previous special education status and whether the student previously spoke English as second language. The table reports standard errors clustered at the student level in columns 1 and 2, and at the family level in column 3. Test scores are standardized to have mean zero and standard deviation one by grade in the full New York City sample. *** = significant at 1 percent level, ** = significant at 5 percent level, * = significant at 10 percent level.

Appendix Figure 1
Middle School Trends



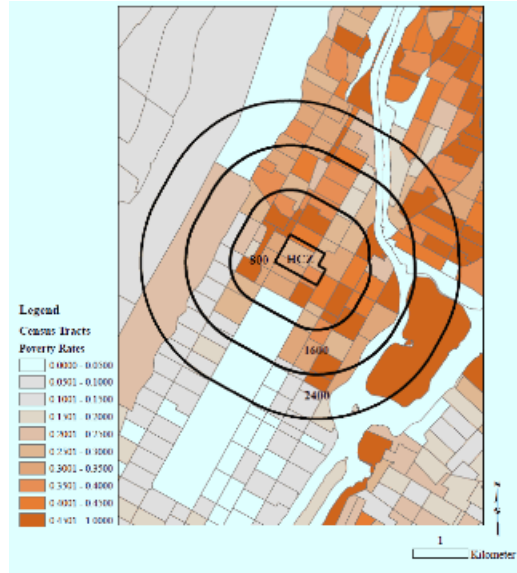
Notes: This figure displays the fraction of students eligible for free lunch and that are either black or Hispanic, and the average math and ELA test scores for those students. In the Zone refers to the original 24-block Children's Zone. Out of the Zone refers to students living within 800 meters of the original Zone.

Appendix Figure 2
Elementary School Trends



Notes: This figure displays the fraction of students eligible for free lunch and that are either black or Hispanic. In the Zone refers to the original 24-block Children's Zone. Out of the Zone refers to students living within 800 meters of the original Zone.

Appendix Figure 3
Poverty Rates in and around the Harlem Children's Zone



Notes: HCZ refers to the original 24-block Children's Zone. Circles correspond to the distance in meters from the nearest border of the original Children's Zone. Poverty rates by block group are from the 2000 Public Use Census data.

Appendix Table 1
Distance First Stage

	Elementary School	Middle School
1995 Interaction	0.005** (0.003)	
1996 Interaction	0.007* (0.004)	
1997 Interaction	0.006* (0.004)	
1998 Interaction	0.003 (0.003)	
1999 Interaction	0.003 (0.003)	
2000 Interaction	0.003 (0.003)	
2001 Interaction	0.002 (0.003)	0.000 (0.000)
2002 Interaction	-0.021 (0.016)	0.000** (0.000)
2003 Interaction	-0.017 (0.015)	0.019*** (0.000)
2004 Interaction	0.136*** (0.014)	0.232*** (0.002)
2005 Interaction	0.019** (0.010)	-0.004 (0.018)
2006 Interaction	0.130*** (0.019)	0.028*** (0.004)
2007 Interaction		-0.004*** (0.001)
2008 Interaction		0.017*** (0.001)
2009 Interaction		0.095*** (0.001)
F-Stat	0.000	0.000
Observations	34148	41029

Notes: This table reports first stage estimates for the distance IV strategy. The sample is restricted to students living within 800 meters of the original 24-block HCZ. We report coefficients on the interaction between cohort and living within the 24-block HCZ. All regressions pool outcomes across grades, and control for grade of test effects, cohort, living within the 24-block HCZ, gender, race and lunch status. Column 2 also controls for previous special education status and whether the student previously spoke English as second language. Standard errors allow for two-way clustering at the student and year level. *** = significant at 1 percent level, ** = significant at 5 percent level, * = significant at 10 percent level.

Appendix Table 2
Middle School Attrition

	Attrition Difference	Lottery RF	Lottery FS	Lottery 2SLS
Math	0.032* (0.017)	0.247*** (0.049)	1.220*** (0.075)	0.203*** (0.037)
ELA	0.032* (0.017)	0.022 (0.039)	1.252*** (0.074)	0.018 (0.031)
Absences	0.032* (0.017)	-3.557*** (0.746)	1.270*** (0.078)	-2.801*** (0.583)
On Grade Level	0.032* (0.017)	-0.003 (0.022)	1.240*** (0.075)	-0.002 (0.017)
Observations	1553	1449	1449	1449

Notes: This table reports robustness checks for the Promise Academy Charter School. The first column reports the effect of winning the lottery on the probability of being in the final sample. Columns 2 through 4 report reduced form, first stage and IV results after trimming the treatment sample by the difference in attrition. All regressions pool outcomes for grades 6 through 8, and control for grade and year of test effects, gender, race, lunch status, previous test scores, previous special education status and whether the student previously spoke English as second language. The table reports standard errors clustered at the student level. Test scores are standardized to have mean zero and standard deviation one by grade in the full New York City sample. *** = significant at 1 percent level, ** = significant at 5 percent level, * = significant at 10 percent level.

Appendix Table 3
Elementary School Attrition

	Attrition Difference	Lottery RF	Lottery FS	Lottery 2SLS
Math	0.016 (0.015)	0.129 (0.094)	0.824*** (0.254)	0.156 (0.112)
ELA	0.016 (0.015)	0.054 (0.081)	0.823*** (0.254)	0.066 (0.094)
Absences	0.016 (0.015)	-2.565** (1.126)	0.927*** (0.250)	-2.932** (1.377)
On Grade Level	0.016 (0.015)	0.016 (0.027)	0.834*** (0.253)	0.019 (0.033)
Observations	762	748	748	748

Notes: This table reports robustness checks for the Promise Academy Charter School. The first column reports the effect of winning the lottery on the probability of being in the final sample. Columns 2 through 4 report reduced form, first stage and IV results after trimming the treatment sample by the difference in attrition. All regressions pool outcomes for grades 3 through 5, and control for grade and year of test effects, gender, race, and lunch status. The table reports standard errors clustered at the student level. Test scores are standardized to have mean zero and standard deviation one by grade in the full New York City sample. *** = significant at 1 percent level, ** = significant at 5 percent level, * = significant at 10 percent level.